



PIT JACKS



GD100-2 / GD150-2 / GD200-2



Capacity: 10 / 15 / 20 t
Stroke: 420 mm

Air Hydraulic Twin-Ram Pit Jack

2 x individually controlled rams offer safe and balanced lifting

Rapid and precise air hydraulic unit with high speed ram travel

Simple modern design with control panel at ergonomic working height

Transversely sliding rams

Can be made to fit all pits due to its adjustable frame,

Frame height is adjusted and set to the customer's individual specifications

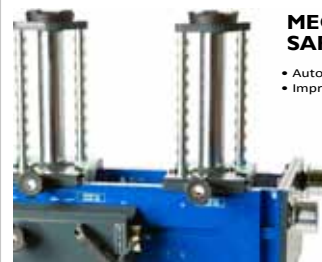
Comprehensive option range: cross beam, support bridge etc.

Supplied with 2 x 100 mm extensions

2 x 'V' Crutches

2 x Axle Saddles

Attached Pit Specification Form to be completed when placing order.



MECHANICAL SAFETY LOCK

- Automatic and instant
- Improved operator safety

Available as option for new units.



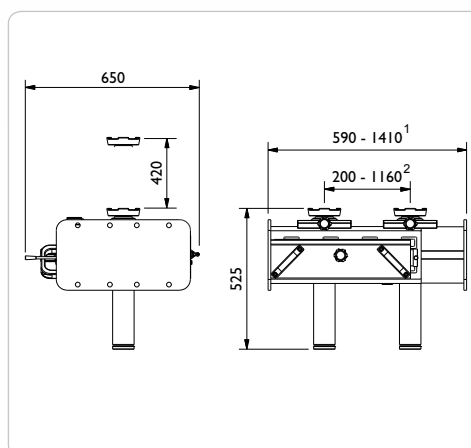
(Version produced for Irish market)



| | GD100-2 | GD150-2 | GD200-2 |
|-----------------------------|-------------|-------------|-------------|
| Capacity | 10 t | 15 t | 20 t |
| Stroke | 420 mm | 420 mm | 420 mm |
| Min. height | 525 mm | 525 mm | 525 mm |
| Max. height | 945 mm | 945 mm | 945 mm |
| Width ¹ | 590-1410 mm | 590-1410 mm | 590-1410 mm |
| Depth | 649 mm | 649 mm | 649 mm |
| Lifting points ² | 200-1160 mm | 200-1160 mm | 200-1160 mm |
| Air supply | 8 - 12 bar | 8 - 12 bar | 8 - 12 bar |
| Air consumption | 350 l/min | 350 l/min | 350 l/min |
| Weight | 220 kg | 220 kg | 220 kg |

¹ Framewidth: 590-890 mm / 850-1150 mm / 1110-1410 mm

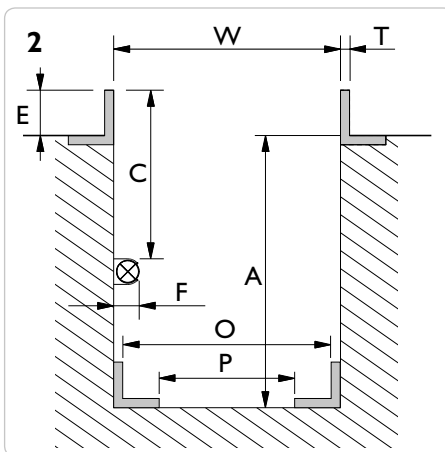
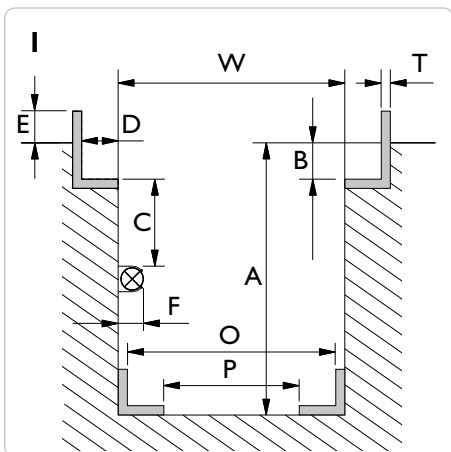
² Distance between lifting points: 200-640 mm / 200-990 mm / 200-1160 mm





PIT SPECIFICATION FORM

- | | | | | | | | | |
|----------------------------------|-------------------------------|-------------------------------|-------------------------------|-------------------------------------|-------------------------------|--------------------------------|--------------------------------|-------------------------------|
| GD - Pit jack | <input type="checkbox"/> 10 t | <input type="checkbox"/> 15 t | <input type="checkbox"/> 20 t | FL - Heavy duty jacking beam | <input type="checkbox"/> 6 t | <input type="checkbox"/> 12 t | <input type="checkbox"/> 16 t | <input type="checkbox"/> 20 t |
| GDT - Telescopic pit jack | <input type="checkbox"/> 15 t | | | SD - Jacking beam | <input type="checkbox"/> 2 t | <input type="checkbox"/> 2,6 t | <input type="checkbox"/> 3,2 t | <input type="checkbox"/> 4 t |
| GGD - Floor pit jack | <input type="checkbox"/> 15 t | | | ABT - Support bridge | <input type="checkbox"/> 20 t | | | |
| AB - Support bridge | <input type="checkbox"/> 20 t | | | MSL - Mechanical Safety Lock | Yes | No | | |



Drawing #: _____

Please measure various places along the length of the pit. **Max 12 mm variation between W min. & W max. throughout the pit length**

W min. = _____ mm

W max. = _____ mm

A min. = _____ mm

B = _____ mm

D = _____ mm

E = _____ mm

H = _____ mm

T = _____ mm

If the pit is mounted with light or other obstructing parts, please fill out C and F:

C min. = _____ mm

F max. = _____ mm

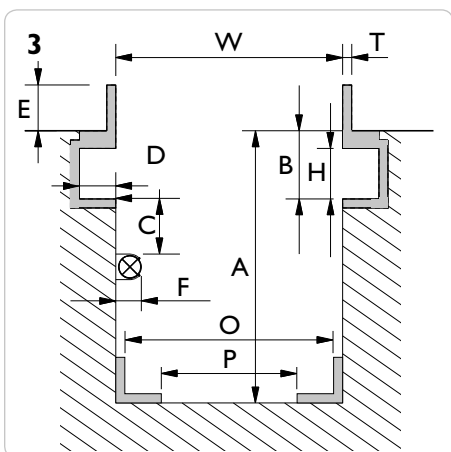
GGDI50S - Floor pit jack

O min. = _____ mm

O max. = _____ mm

P min. = _____ mm

P max. = _____ mm



4 Drawing

Placing of saddle

The placing of top saddle **excluding** cross beam adaptor, safety stand and extensions is required:

- above workshop floor _____ mm
- levelling with workshop floor
- below workshop floor _____ mm

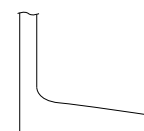
The top of the cylinder will be positioned +/- 50 mm according to requested level

Option

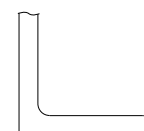
Please note, mounting of different options will increase the min. height:

- Cross beam T4-1 = + 100 mm
- Cross beam T5-1 = + 95 mm
- Cross beam T6-1 = + 55 mm
- Cross beam T4-2 = + 145 mm
- Cross beam T5-2 = + 140 mm
- Cross beam T6-2 = + 90 mm
- Safety stand S200 = + 65 mm

Rolltype / Rail profile



Conical/
tilted



Cylindrical/
straight

PLEASE NOTE: It is the customer's responsibility that the given measures are correct and sufficient and that the pit is built and anchored to withstand the designated loading.

Date:

Measured by:

Dealer:

Signature:

TYRECARE LTD

Killeshandra, Co. Cavan, Ireland • Tel. +353 49 433 4486
sales@tyrecare.ie • www.tyrecare.ie