



**890N**

**Organization:**

**To examine:**

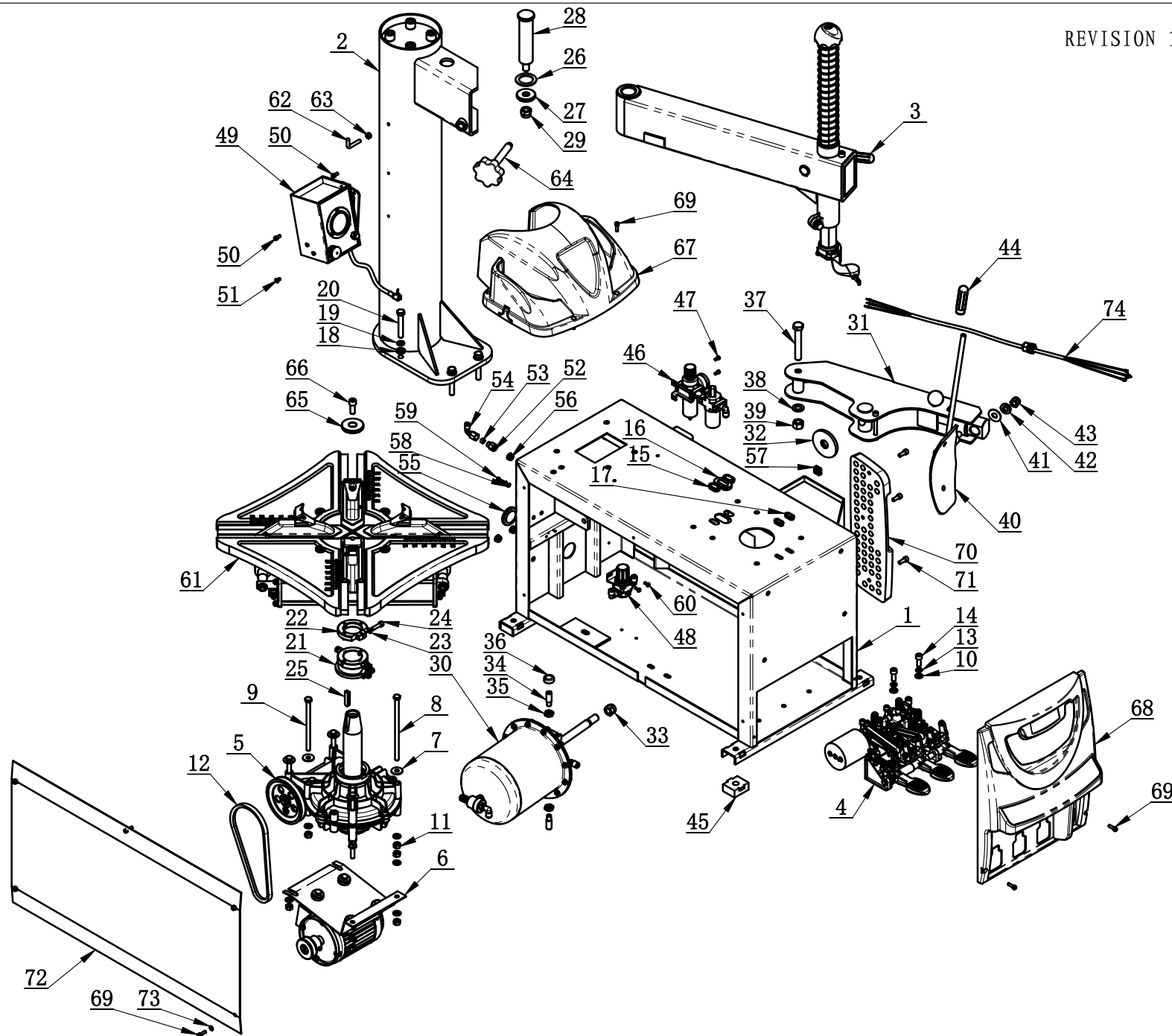
**Approval:**

**Version: A-01**



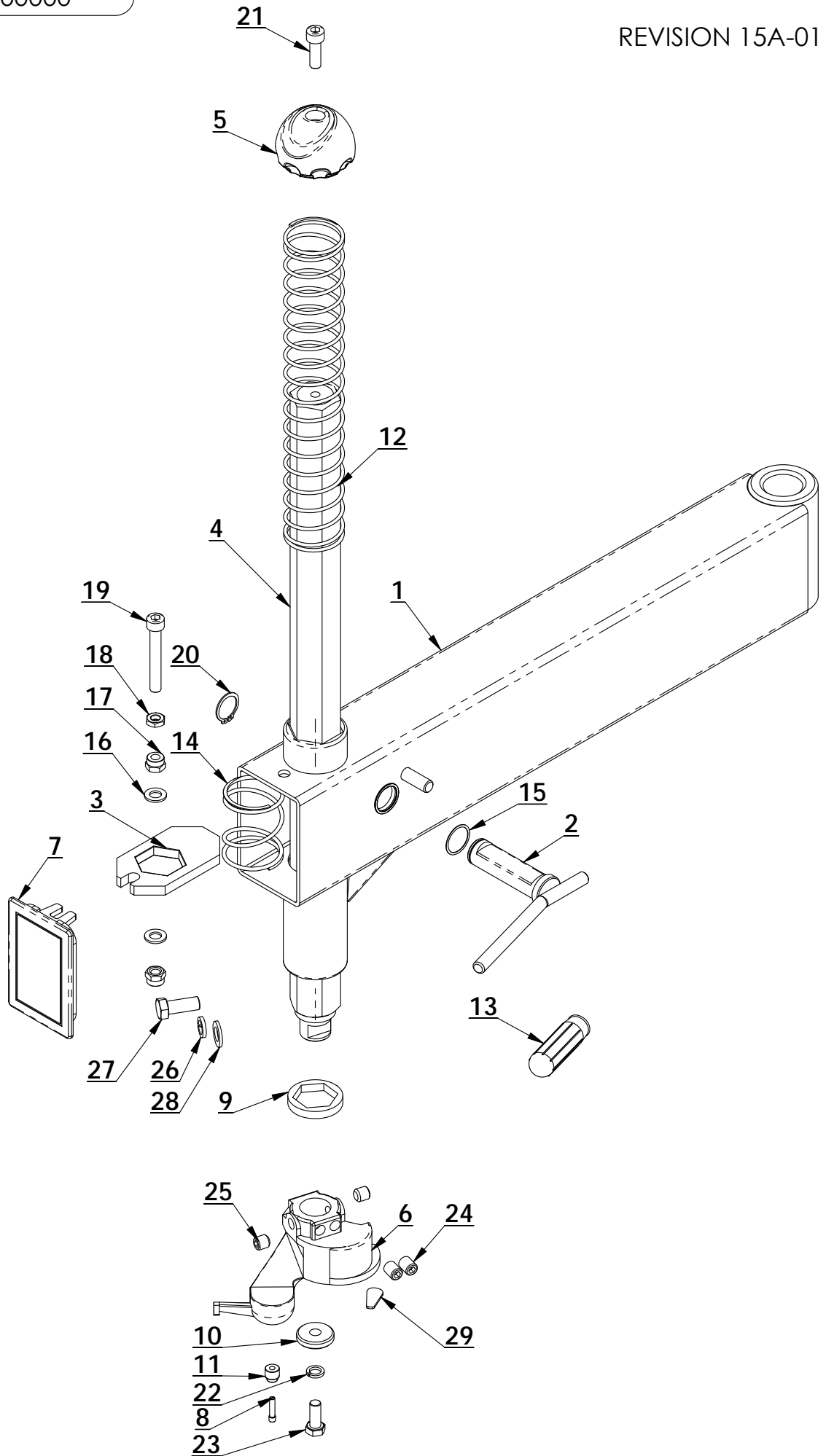
REVISION 15A-01

C-5E-1000000

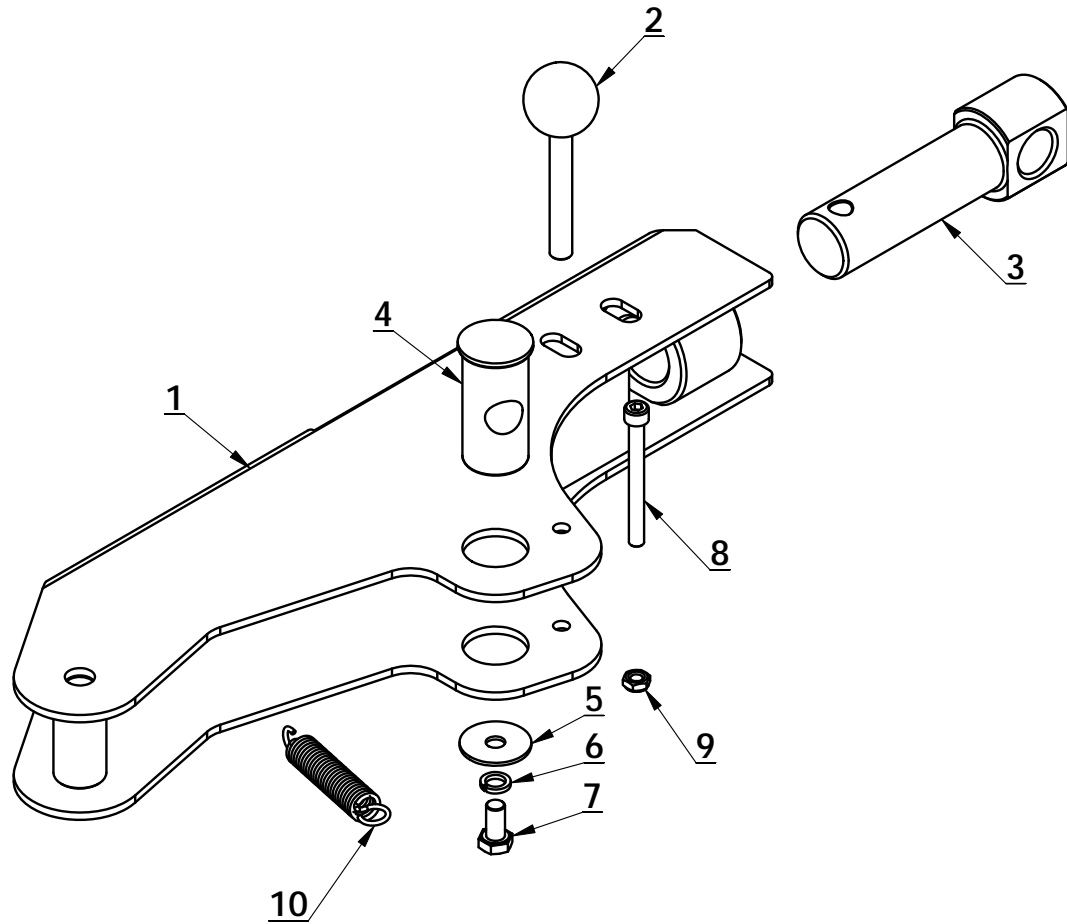


ITEM	PART. No	DESCRIPTION.	QT. Y
1	C-5E-1100000	BODY	1
2	C-5E-1200000	COLUMN WELDING ASSY	1
3	C-5E-1300000	SWING ARM	1
4	CT-D-5100000	PEDAL ASSEMBLY	1
5	CT-J-4100000	GEARBOX ASSEMBLY	1
6	CT-DJ-0334122	MOTOR	1
7	GB96. 1-10	LARGE WASHER A GRADE	6
8	GB5781-M10X200	BOLT M10X200	4
9	GB5781-M10×160	HEXANGULAR BOLT	2
10	GB95-10	FLAT WASHER	16
11	GB41-M10	HEXANGULAR NUT	14
12	CT-DJ-0000007	TRIANGLE	1
13	GB93-10	STANDARD SPRING WASHER	2
14	GB70. 1-M10×25	INNER HEXA CYLINDRICAL SCREW	2
15	C-54-1000022	PLUG C	2
16	C-54-1000028	PLUG B	1
17	C-54-1000023	PLUG A	2
18	GB95-12	FLAT WASHER	4
19	GB93-12	STANDARD SPRING WASHER	4
20	GB5782-M12×75	HEXANGULAR BOLT	4
21	CT-Q-5000000	ROTATING UNION	1
22	CT-Q-6000000	CLAMP RING	1
23	GB93-8	STANDARD SPRING WASHER	1
24	GB70. 1-M8×30	INNER HEXA CYLINDRICAL SCREW	1
25	GB1096-C12×8×45	COMMON FLAT KEY	1
26	C-54-1000011	ADJUSTING WASHER	1
27	C-54-1000009	SHAFT WASHER	1
28	C-54-1000008	VERTICAL SHAFT	1
29	GB889. 1-M16	1-TYPE PREVAILING TORQUE TYPE HEXAGON LOCK NUT	1
30	CT-LS-9200000	BEAD BREAKER CYLINDER ASSEMBLY	1
31	CT-B-A000000	BEAD BREAKER	1
32	C-54-1000016	WASHER	1
33	GB889. 2-M18×1. 5	NUT M18X1. 5	1
34	C-54-1000010	SCREWS M14X42	2
35	GB6172. 1-M14	HEXANGULAR THIN NUT	2
36	C-54-1000013	SEALED COVER	1
37	GB5780-M16×100	HEXANGULAR BOLT	1
38	GB95-16	FLAT WASHER	1
39	GB41-M16	HEXANGULAR NUT	1
40	CT-C-2100000	BEAD BREAKER BLADE	1

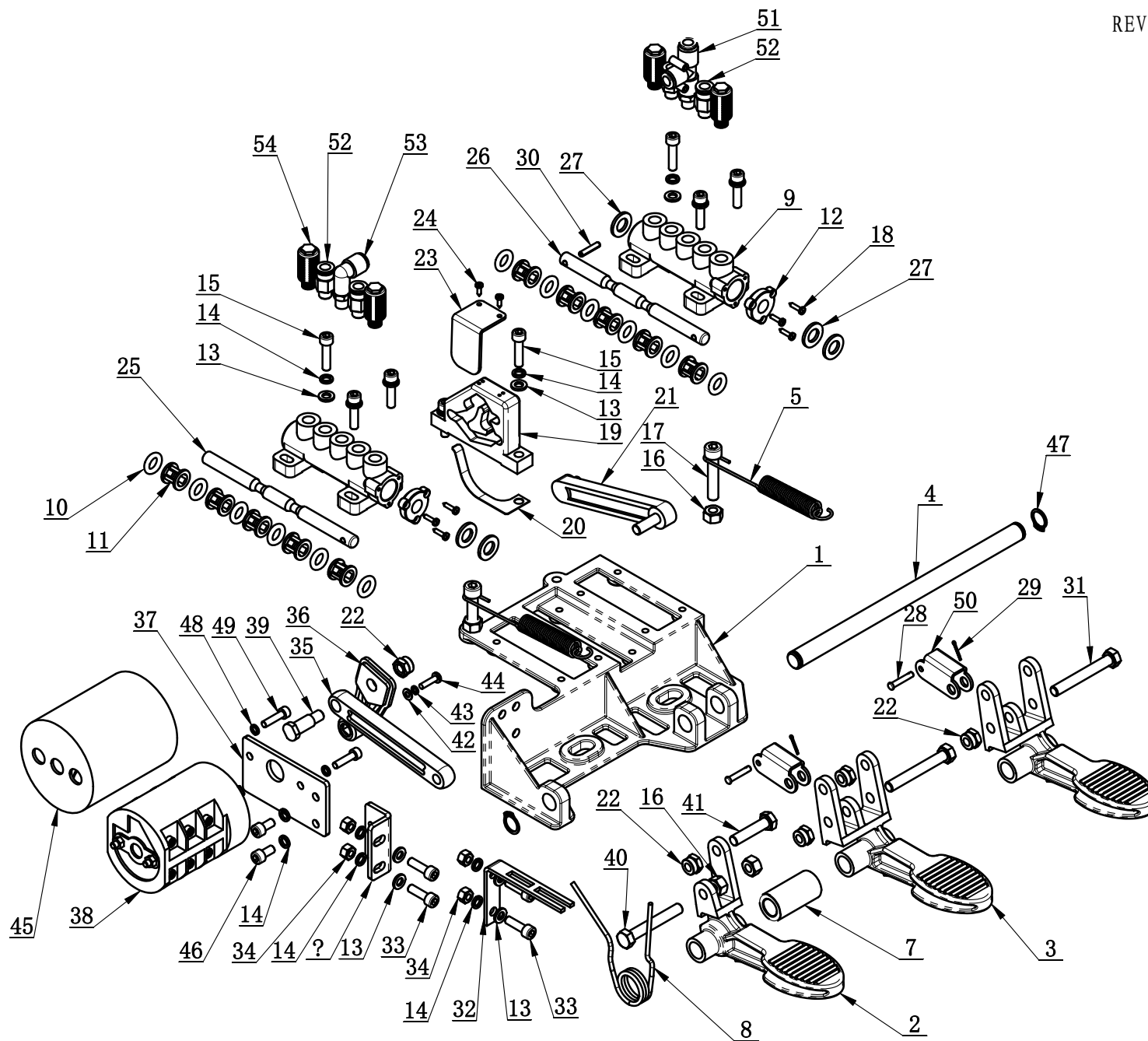
ITEM	PART. No	DESCRIPTION.	QT. Y
41	C-54-1000002	WASHER	1
42	GB955-14	WAVE-FORM SPRING WASHER	1
43	GB889. 1-M14	1-TYPE PREVAILING TORQUE TYPE HEXAGON LOCK NUT	1
44	TC-40-1200022	RUBBER COVER	1
45	C-54-1000005	RUBBER FOOT	4
46	CT-F-3121100	AIR REGULATOR ASSEMBLY	1
47	GB70. 1-M5×10	INNER HEXA CYLINDRICAL SCREW	2
48	H-40-1600000	VALVE	1
49	CT-K-3700000	INFLATOR COVER ASSEMBLY	1
50	GB70. 1-M6×12	INNER HEXA CYLINDRICAL SCREW	3
51	GB70. 3-M6×12	INNER COUNTERSUNK SCREW	1
52	FPC 8-02	MALE STRAIGHT	1
53	C-54-1000027	JOINT SEALING GASKET	1
54	FPLF 8-02	FEMALE ELBOW	1
55	C-61-1000002	CUSHION BUSHING	1
56	C-71-1000027	HELPER RUBBE PLUG	3
57	C-54-1000015	STOP-UP	1
58	GB95-5	FLAT WASHER	2
59	GB5782-M5×16-8. 8	HEXANGULAR BOLT	1
60	GB818-M5×12-H	CROSS PANHEAD SCREW	2
61	CT-Y-5000000	TURNTABLE ASSEMBLY	1
62	C-71-1000024	INFLATING GUN HOOK	1
63	GB41-M8	HEXANGULAR NUT	1
64	C-54-1400000	HANDLE WHEEL	1
65	C-54-1000012	PRESS COVER	1
66	GB70. 1-M12×30	INNER HEXA CYLINDRICAL SCREW	1
67	C-5E-1000001	TOLL BOX	1
68	C-5E-1000002	FRONT COVER	1
69	GB70. 1-M6×20	INNER HEXA CYLINDRICAL SCREW	11
70	C-5E-1000003	RIM SUPPORT	1
71	GB70. 1-M8×20	INNER HEXA CYLINDRICAL SCREW	3
72	C-61-1000001	SIDE PANEL	1
73	GB95-6	FLAT WASHER	5
74	CT-E-UN00410	CABLE	1



ITEM	PART. No	DESCRIPTION.	QT. Y
1	C-54-1310000	SWING ARM	1
2	C-54-1320000	LOCK HANDLE	1
3	C-54-1300001	HEXAGON LOCK PLATE	1
4	C-54-1300002	HEXAGON SHAFT	1
5	C-5E-1300001	VERTICAL SHAFT COVER	1
6	C-54-1300004	DEMOUNTING HEAD	1
7	C-54-1300005	DECORATING COVER	1
8	C-54-1300006	ROLLER BOLT	1
9	C-54-1300007	SHOCK ABSORBER WASHER	1
10	C-54-1300008	PRESS WASHER	1
11	C-54-1300009	ROLLER	1
12	C-54-1300010	VERTICAL SHAFT SPRING	1
13	TC-40-1200022	RUBBER COVER	1
14	C-54-1300012	VERTICAL SHAFT SPRING	1
15	C-54-1300013	ADJUSTING WASHER	4
16	GB95-10	FLAT WASHER	2
17	GB889. 1-M10	1-TYPE PREVAILING TORQUE TYPE HEXAGON LOCK NUT	2
18	GB6172. 1-M10	HEXANGULAR THIN NUT	1
19	GB70. 1-M10×70	INNER HEXA CYLINDRICAL SCREW	1
20	GB894. 1-25	SHAFT ELATIC BIG RETAINING RING A-TYPE	1
21	GB70. 1-M10×30	INNER HEXA CYLINDRICAL SCREW	1
22	GB93-10	STANDARD SPRING WASHER	1
23	GB5783-M10×25	HEXANGULAR BOLT	1
24	GB77-M12×16	INNER HEXA FLAT TERMINUS SET SCREW	2
25	GB77-M12×12	INNER HEXA FLAT TERMINUS SET SCREW	2
26	GB93-12	STANDARD SPRING WASHER	1
27	GB5783-M12×30	HEXANGULAR BOLT	1
28	GB95-12	FLAT WASHER	1
29	C-54-8000007	PLASTIC COVER	1



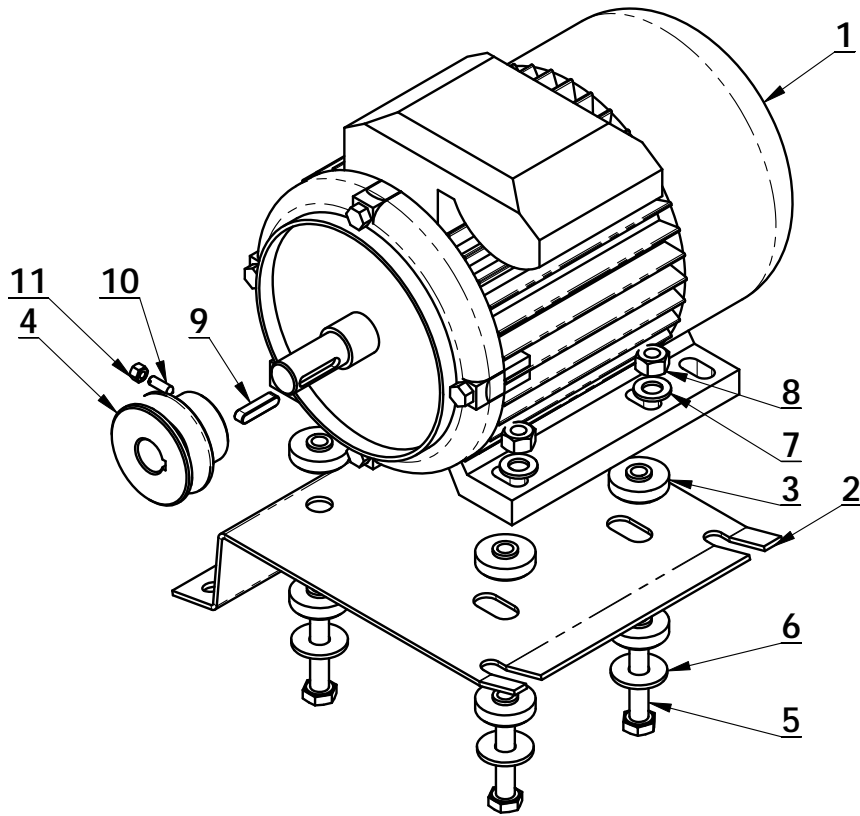
ITEM	PART. No	DESCRIPTION.	QT. Y
1	CT-B-A100000	BEAD BREAKER	1
2	CT-B-A200000	PIN SHAFT	1
3	CT-B-A000001	TURN ROD	1
4	CT-B-A000002	CONNECT ROD	1
5	CT-B-6000003	PAD	1
6	GB93-10	STANDARD SPRING WASHER	1
7	GB5781-M10 × 20	HEXANGULAR BOLT	1
8	GB70. 1-M8 × 80	INNER HEXA CYLINDRICAL SCREW	1
9	GB889. 1-M8	1-TYPE PREVAILING TORQUE TYPE HEXAGON LOCK NUT	1
10	CT-B-2000002	SPRING	1



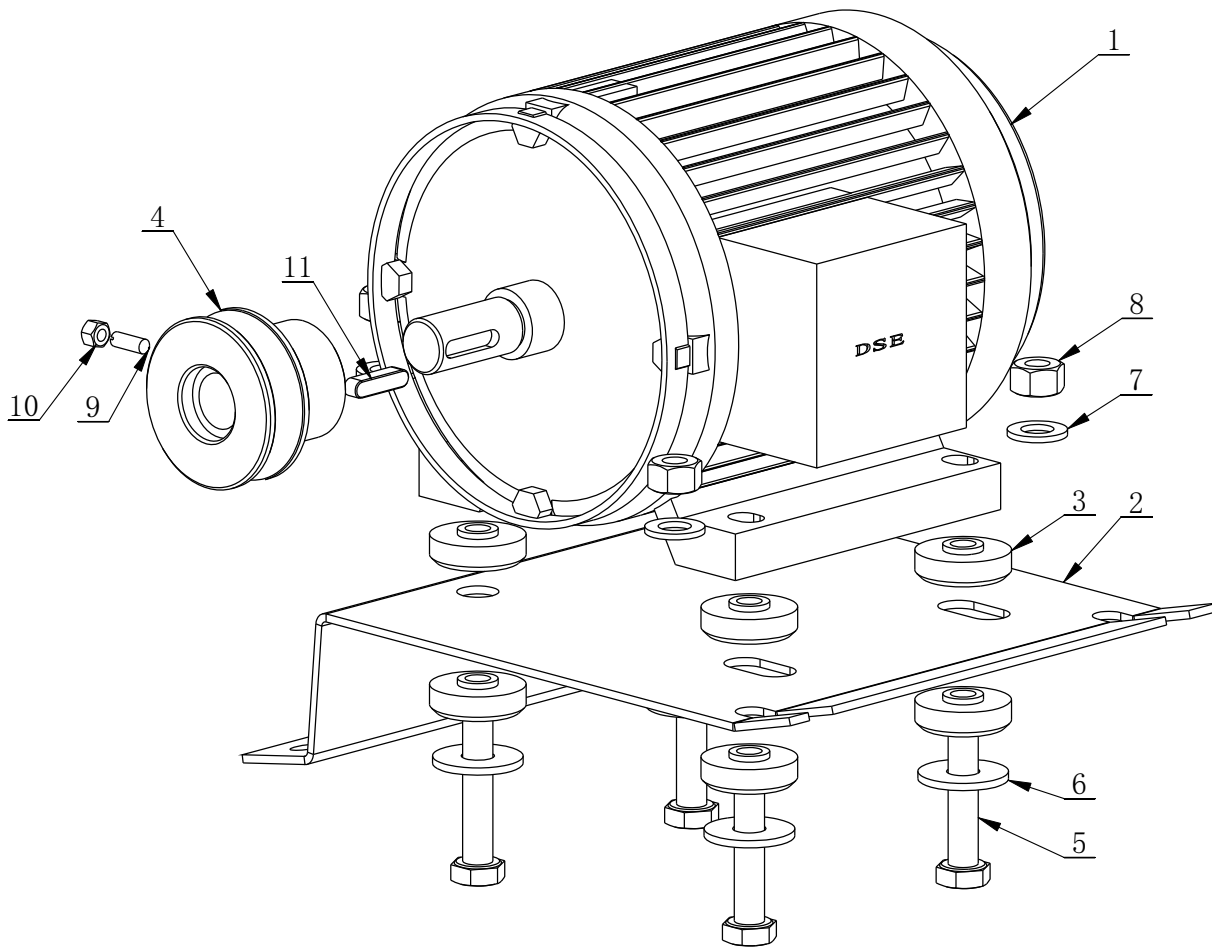


序号	编码	中文名称	数量
1	CT-D-5100001	三踏脚铝底盘	1
2	CT-D-5100002	开关踏脚	1
3	CT-D-5100003	气阀踏脚	2
4	CT-D-5100004	底轴	1
5	CT-D-5100007	拉簧	2
6	CT-D-5100008	开关连接弯板	1
7	CT-D-2100001	脚踏板隔套	1
8	CT-D-2100002	扭簧	1
9	CT-D-1110001	座阀	2
10	CT-D-1110003	O型圈	12
11	CT-D-1110004	新隔套	10
12	CT-D-1110005	座阀端盖	2
13	GB95-6	平垫圈 C级 6	12
14	GB93-6	标准型弹簧垫圈 6	14
15	GB70. 1-M6×25	内六角圆柱头螺钉 M6×25	8
16	GB41-M8	六角螺母 C级 M8	4
17	GB70. 1-M8×40	内六角圆柱头螺钉 M8×40	2
18	GB845-ST2. 9×13 H C	十字槽盘头自攻螺钉 ST2. 9×13 H C	6
19	CT-D-1100009	凸轮	1
20	CT-D-2100004	连杆弹片	1
21	CT-D-1100008	凸轮连杆	1
22	GB889. 1-M8	1型非金属嵌件六角锁紧螺母 M8	5
23	CT-D-1100011	凸轮挡板	1
24	GB845-ST2. 9×9. 5 H C	十字槽盘头自攻螺钉 ST2. 9×9. 5 H C	2
25	CT-D-2600003	吊阀阀杆	1
26	CT-D-2600001	吊阀大气缸阀杆	1
27	GB95-10	平垫圈 C级 10	5
28	GB882-4×22	销轴 4×22	2
29	GB91-1. 6×10	开口销 1. 6×10	2
30	GB879. 1-4×20	弹性圆柱销 直槽 重型 4×20	1
31	GB5782-M8×60	六角头螺栓 M8×60	2
32	CT-D-2100010	扭簧架	1
33	GB70. 1-M6×20	内六角圆柱头螺钉 M6×20	4
34	GB41-M6	六角螺母 C级 M6	4
35	CT-D-2100011	开关拉杆	1
36	CT-D-1100010	大开关转体	1
37	CT-D-5100009	开关支板	1
38	CT-D-1100018	开关 40A	1
39	CT-D-2100012	开关转体转轴	1
40	GB5782-M8×55	六角头螺栓 M8×55	1

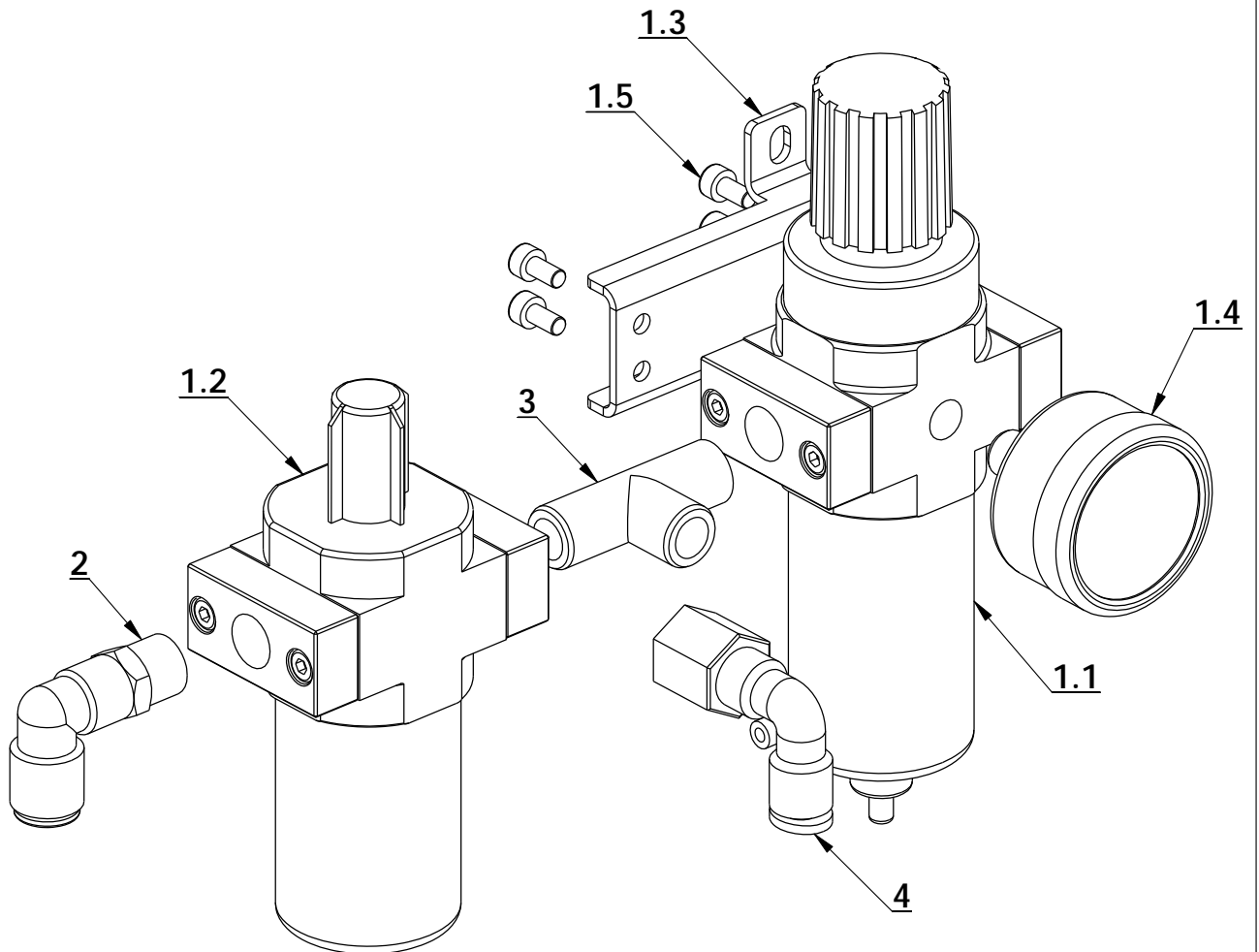
序号	编码	中文名称	数量
41	GB5781-M8×35	六角头螺栓 全螺纹 C级 M8×35	1
42	GB95-4	平垫圈 C级 4	1
43	GB93-4	标准型弹簧垫圈 4	1
44	GB818-M4×16-H	十字槽盘头螺钉 M4×16-H	1
45	CT-D-1100014	40A开关胶套	1
46	GB70.1-M6×12	内六角圆柱头螺钉 M6×12	2
47	GB894.1-14	轴用弹性挡圈 A型 14	2
48	GB93-5	标准型弹簧垫圈 5	2
49	GB70.1-M5×20	内六角圆柱头螺钉 M5×20	2
50	CT-D-5100005	连接架	2
51	FPD 8-01	三通边部 Φ8, R1/8	1
52	FPC 8-01	直通 8-G1/8	4
53	FPL 8-01	内插弯头 Φ8 ,R1/8	1
54	FSK 01	塑料消声器	4



ITEM	PART. No	DESCRIPTION.	QT. Y
1	CT-DJ-0018112	MOTOR	1
2	CT-DJ-0000001	MOTOR SUPPORT	1
3	CT-DJ-0000002	RUBBER WASHER	8
4	CT-DJ-0000003	MOTOR BELT PULLEY	1
5	GB5781-M10×50	HEXANGULAR BOLT	4
6	GB96. 2-10	LARGE WASHER C GRADE	4
7	GB95-10	FLAT WASHER	4
8	GB41-M10	HEXANGULAR NUT	4
9	GB1096-6×6×28	COMMON FLAT KEY	1
10	GB71-M5×16	SLOTTED CONIC HEAD SET SCREW	1
11	GB41-M5	HEXANGULAR NUT	1



ITEM	PART. No	DESCRIPTION.	QT. Y
1	CT-DJ-0034122	MOTOR (0.75KW 380V 50Hz 3P)	1
2	CT-DJ-0000001	MOTOR SUPPORT	1
3	CT-DJ-0000002	RUBBER WASHER 220V MOTOR BELT PULLEY ( $\Phi$ 58X40)	8
4	CT-DJ-0000003		1
5	GB5781-M10 $\times$ 50	HEXANGULAR BOLT	4
6	GB96.2-10	LARGE WASHER C GRADE	4
7	GB95-10	FLAT WASHER	4
8	GB41-M10	HEXANGULAR NUT	4
9	GB71-M5 $\times$ 16	SLOTTED CONIC HEAD SET SCREW	1
10	GB41-M5	HEXANGULAR NUT	1
11	GB1096-6 $\times$ 6 $\times$ 25	COMMON FLAT KEY	1

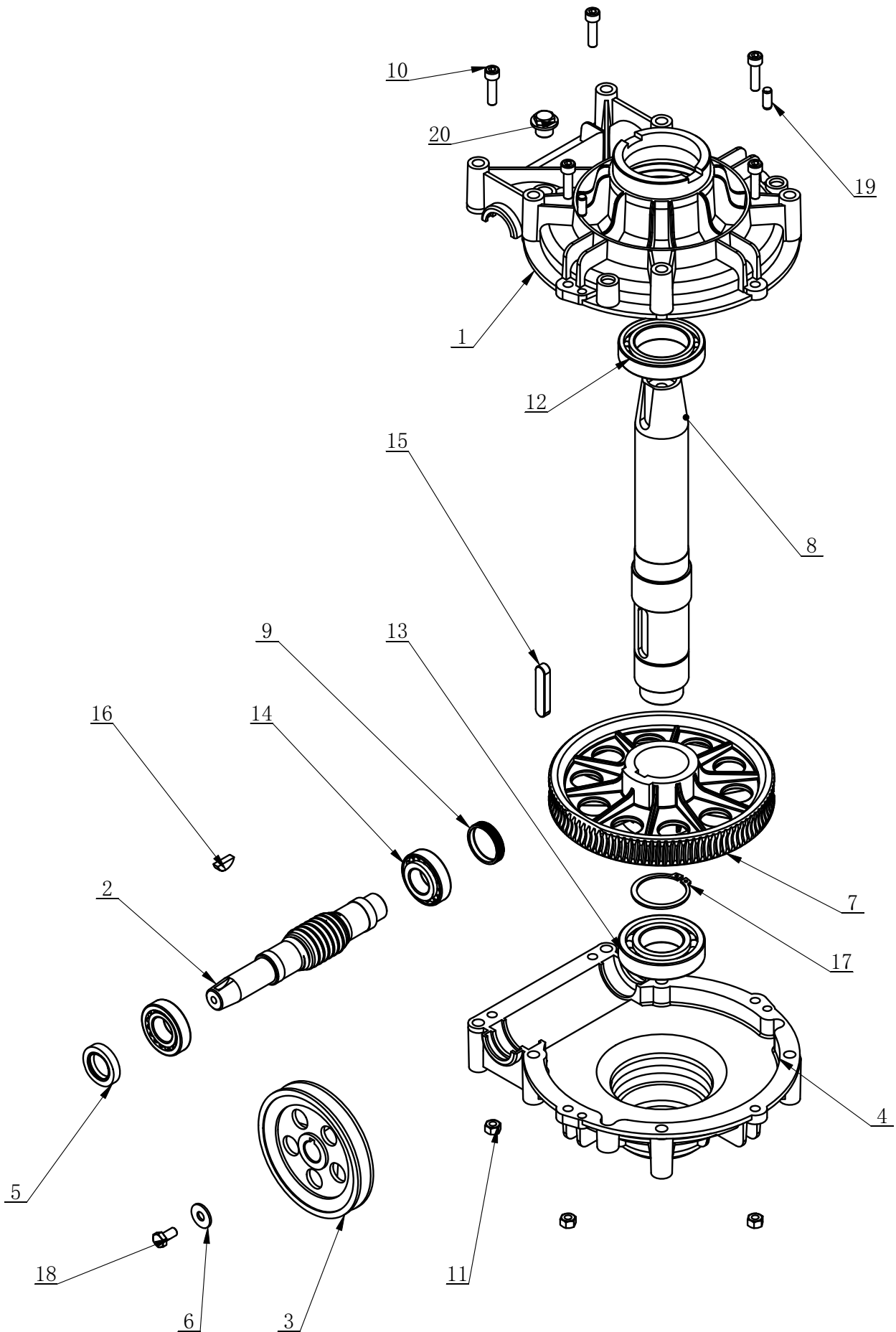


ITEM	PART. No	DESCRIPTION.	QT. Y
1	CT-F-3000100	AIR REGULATOR ASSEMBLY	1
1.1	CT-F-3000010	OIL CPU	1
1.2	CT-F-3000020	WATER CPU	1
1.3	CT-F-2000009	AIR REGULATOR BRACKET	1
1.4	CT-F-2000003	PRESSURE GAUGE	1
1.5	GB70.1-M4 × 8	INNER HEXA CYLINDRICAL SCREW	4
2	FPL 8-02	INSERT ELBOW $\Phi 8, R1/4$	1
3	PEH 02-02	FEMALE UNION TEE	1
4	FPLF8-02	INSERT ELBOW $\phi 8, R1/4$	1

CT-J-4100000

REDUCER CT-J-4100000

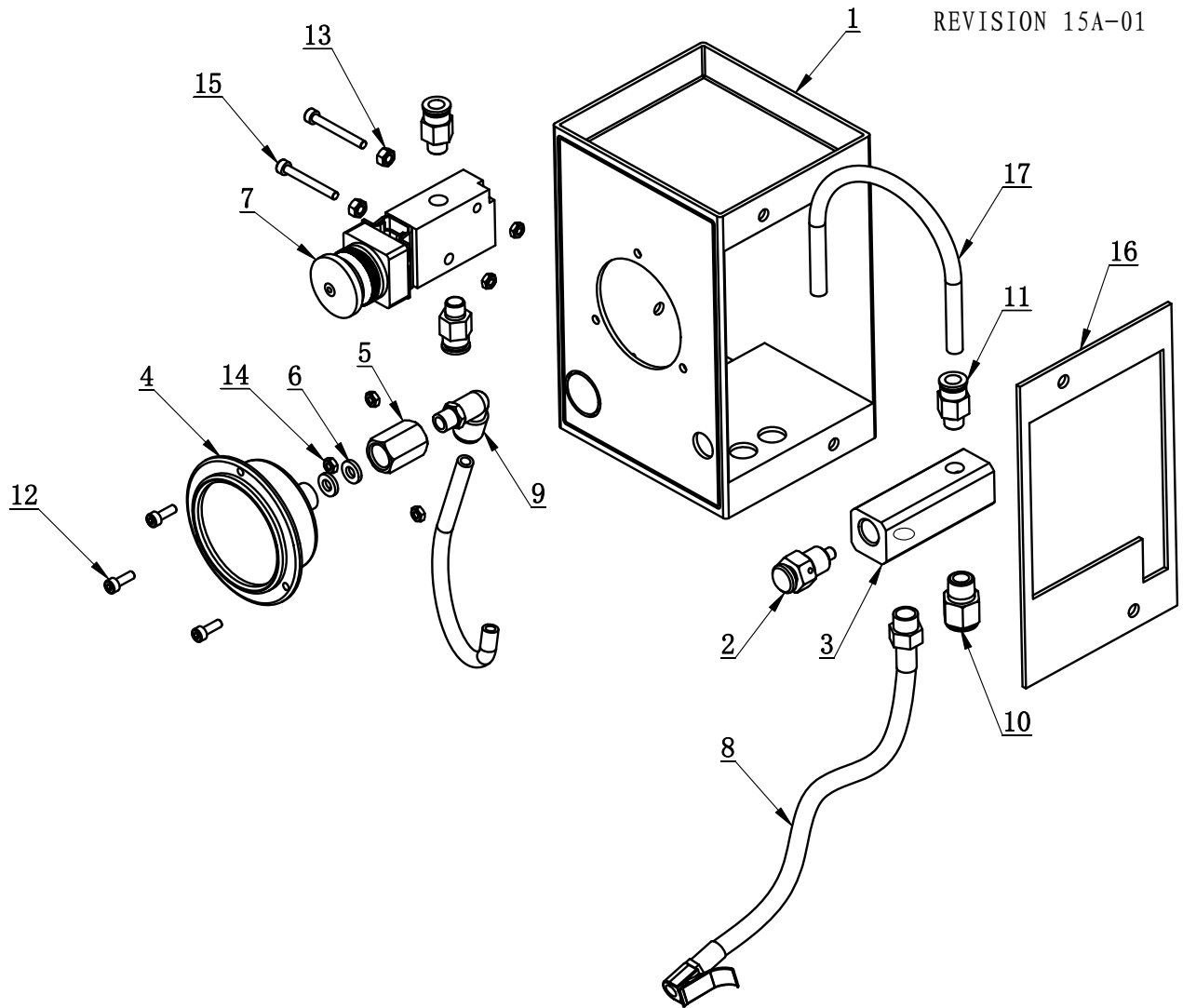
REVISION 15A-01



ITEM	PART. NO	DESCRIPTION.	QT. Y
1	CT-J-0000006	GEARBOX TOP	1
2	CT-J-0000004	WORM ROD	1
3	CT-J-0000008	BELT PULLEY	1
4	CT-J-0000005	GEARBOX TOP	1
5	FB25-40 GB13871.92	SEALED RING	1
6	GB96.2-8	LARGE WASHER C GRADE	1
7	CT-J-0000003	WORM	1
8	CT-J-0000002	WORM SHAFT	1
9	CT-J-0100000	CAP	1
10	GB70.1-M8×30	INNER HEXA CYLINDRICAL SCREW	5
11	GB41-M8	HEXANGULAR NUT	5
12	GB276-6010	DEEP GROOVE BALL BEARINGS	1
13	GB276-6208	DEEP GROOVE BALL BEARINGS	1
14	GB297-30205	CYLINDRICAL BALL BEARING	2
15	GB1096-12×8×56	COMMON FLAT KEY	1
16	GB1099.1-6×9×22	COMMON SEMI-CIRCULAR KEY	1
17	GB894.1-50	SHAFT ELATIC BIG RETAINING RING A-TYPE	1
18	GB5781-M8×16	HEXANGULAR BOLT	1
19	GB119.1-8×20	CYLINDRICAL PIN	2
20	TC-10-1400013	BOLT	1

CT-K-3700000

REVISION 15A-01

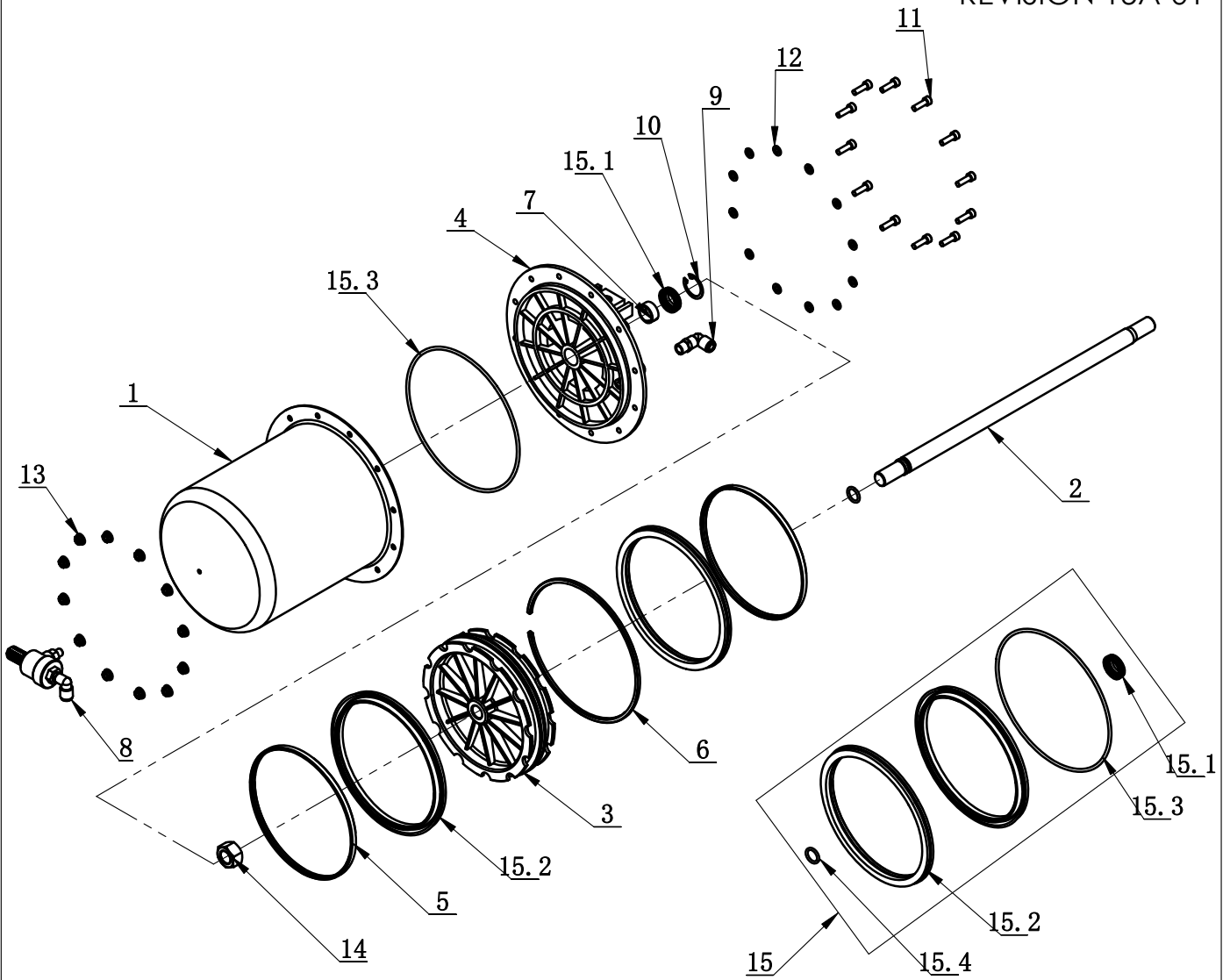


ITEM	PART. No	DESCRIPTION.	QT. Y
1	CT-K-3100001	PRESSURE GAUGE COVER	1
2	CT-K-3110000	EXHAUST VALVE ASSEMBLY	1
3	CT-K-3120000	AIR DISTRIBUTING VALVE	1
4	CT-K-3100004	PRESSURE GAUGE	1
5	CT-K-3100002	CONNECT NUT	1
6	TC-10-1620003	AIR REGULATOR WASHER	2
7	JEL-MSV22-06PB	VALVA	1
8	CT-K-3100003	INFLATING HOSE	1
9	FPL 8-01	INSERT ELBOW $\Phi 8$ , R1/8	1
10	FPC 8-02	MALE STRAIGHT	1
11	FPC 8-01	MALE STRAIGHT	3
12	GB70. 1-M4 $\times$ 12	INNER HEXA CYLINDRICAL SCREW	3
13	GB6170-M5	HEXANGULAR NUT 1-TYPE	2
14	GB6170-M4	HEXANGULAR NUT 1-TYPE	5
15	GB70. 1-M4 $\times$ 35	INNER HEXA CYLINDRICAL SCREW	2
16	CT-K-3100005	SIDE PANEL	1
17	PU-0800240-Y	PU HOSE $\Phi 8 \times 5$	1

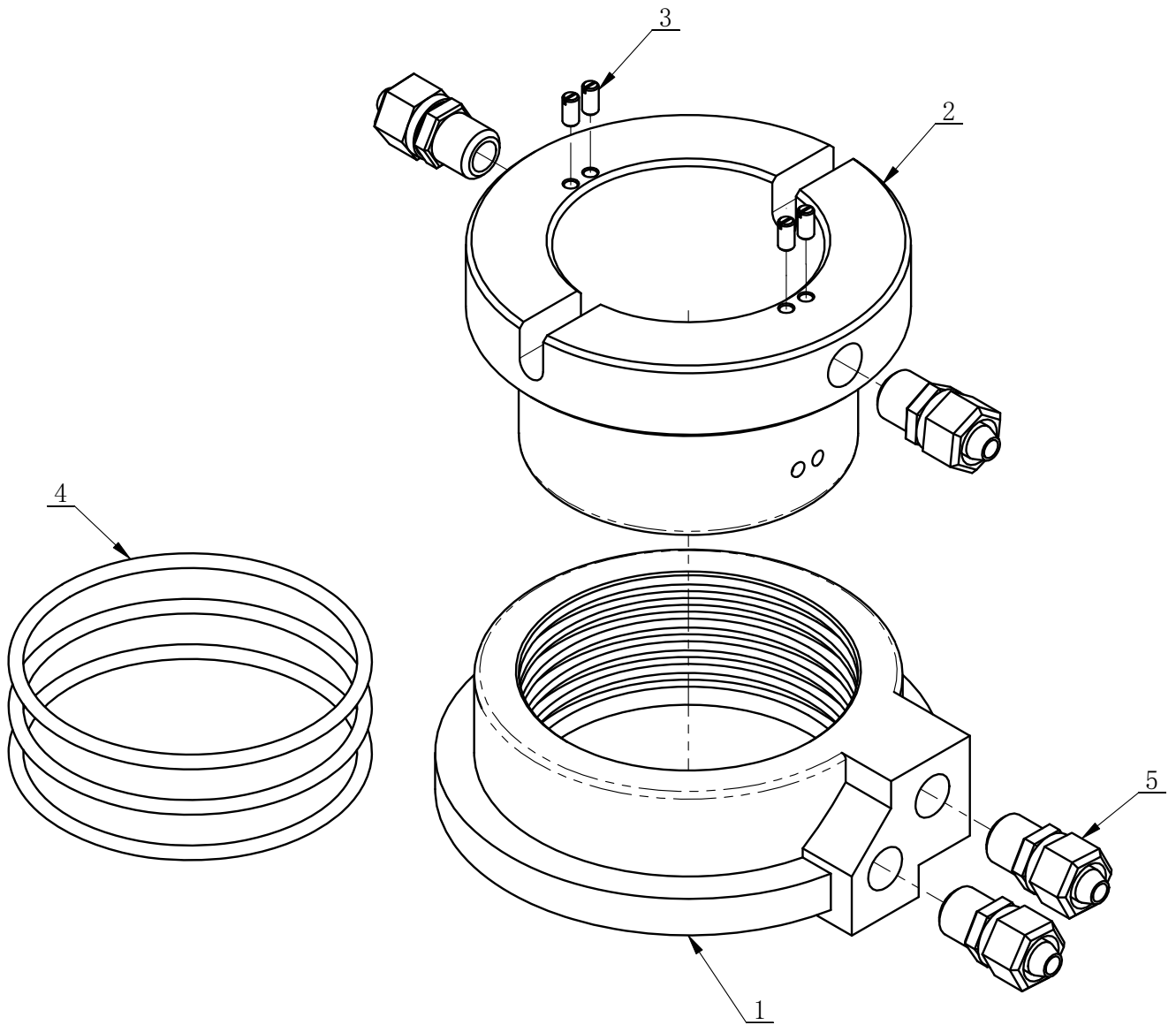


CT-LS-9200000

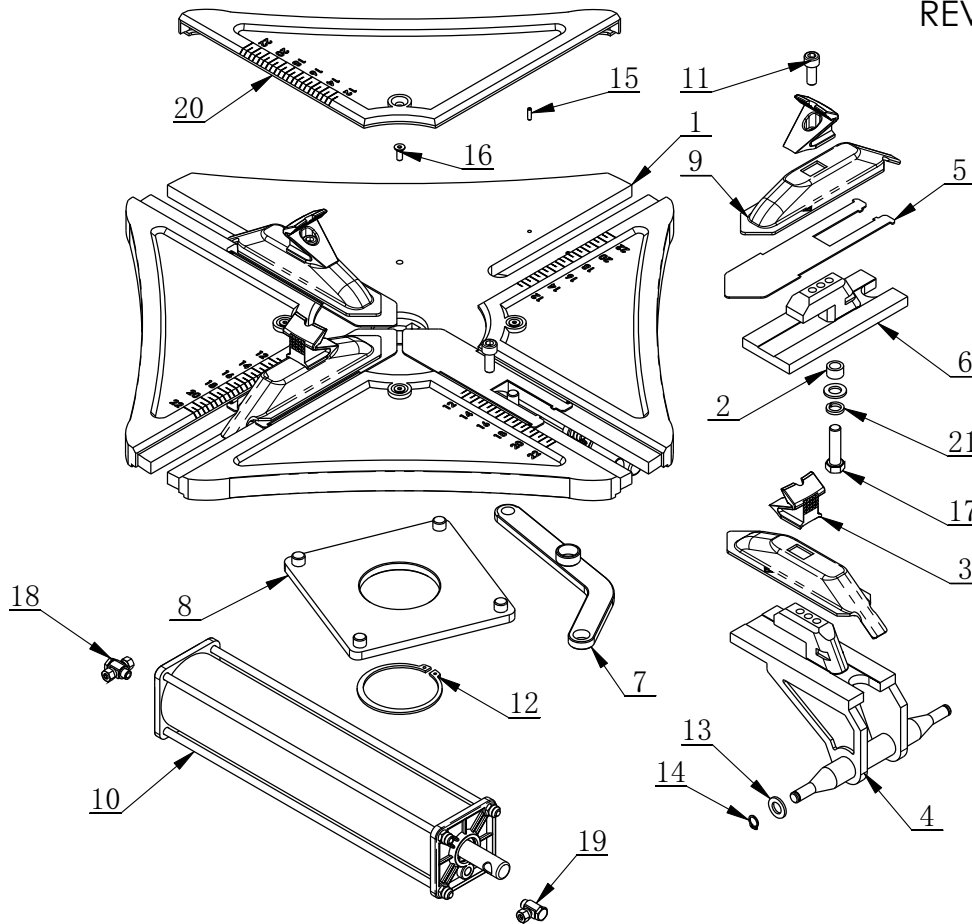
REVISION 15A-01



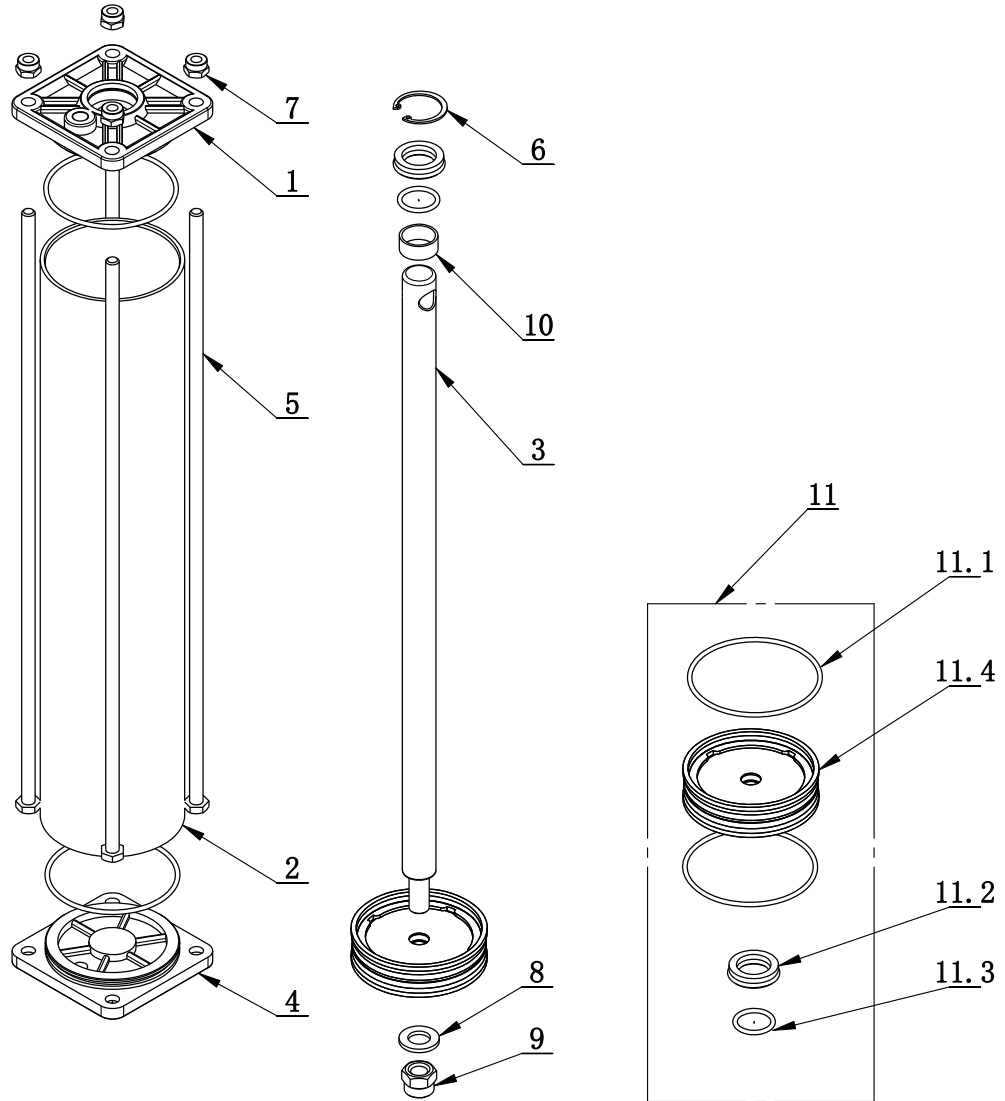
ITEM	PART. No	DESCRIPTION.	QT. Y
1	CT-LS-1100002	CYLINDER BODY	1
2	CT-LS-9100001	CYLINDER PISTON ROD	1
3	CT-LS-1100003	PISTON	1
4	CT-LS-1100004	CYLINDER COVER	1
5	CT-LS-1100006	CLAMP RING	2
6	CT-LS-1100007	PISTON SUPPORT RING	1
7	CT-LS-1100008	GUIDER SPACER	1
8	CT-LS-1320000	QUICK DEFLATE VALVE ON BODY	1
9	FPL 8-02	INSERT ELBOW $\Phi 8$ , R1/4	1
10	GB893. 2-30	ELASTIC RETAINING RING B-TYPE	1
11	GB70. 1-M6 $\times$ 20	INNER HEXA CYLINDRICAL SCREW	12
12	GB95-6	FLAT WASHER	12
13	GB6177. 1-M6	HEXA FLANGE NUT	12
14	GB6171- M18 $\times$ 1. 5	NUT THIN TOOTH	1
15	CT-LS-1110000	CYCLINDER SEALING PARTS ASSEMBLY	1
15. 1	CT-Y-0160007	SEAL-ROD, CYLNDR	1
15. 2	CT-LS-1100009	Y-RING	2
15. 3	GB3452. 1-185 $\times$ 3. 55-G	O-RING G TYPE	1
15. 4	GB3452. 1-15. 5 $\times$ 2. 65-G	HYDRAULIC-PNEUMATIC RUBBER O-RING G TYPE	1



ITEM	PART. No	DESCRIPTION.	QT. Y
1	CT-Q-1000001	AIR GUIDE EXTERNAL BUSHING	1
2	CT-Q-1000002	AIR GUIDE ROTATION BUSHING	1
3	GB73-M3×6	SLOTTED FLATTEN HEAD SET SCREW	4
4	GB3452. 1-60×2. 65-G	HYDRAULIC-PNEUMATIC RUBBER O-RING G TYPE	3
5	PCS8-01	MALE STRAIGHT NUT	4

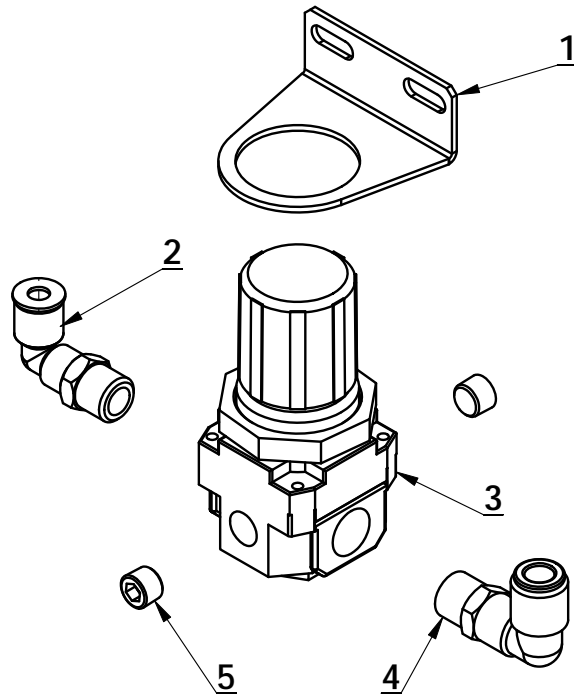


ITEM	PART. No	DESCRIPTION.	QT. Y
1	CT-Y-5040000	TURNTABLE	1
2	CT-Y-0100003	SPACER	4
3	CT-Y-5000002	CLAMP	4
4	CT-Y-5060000	BRACKET-CYLINDER	2
5	CT-Y-5000004	WEARABLE WASHER	4
6	CT-Y-5000003	PRESS BOARD	2
7	CT-Y-5020000	CONNECTION PLATE	4
8	CT-Y-5030000	SQUARE TURNTABLE	1
9	CT-Y-5000001	SLIDE COVER	4
10	CT-Y-5010000	CYLINDER ASSEMBLY D80X350	2
11	GB70. 1-M10×25	INNER HEXA CYLINDRICAL SCREW	4
12	GB894. 1-85	SHAFT ELATIC BIG RETAINING RING A-TYPE	1
13	GB95-12	FLAT WASHER	8
14	GB894. 1-12	SHAFT ELATIC BIG RETAINING RING A-TYPE	4
15	GB879. 1-4×14	ELASTIC CYLINDRICAL PIN HEAVY	8
16	GB70. 3-M6×16	INNER COUNTER SUNK SCREW	4
17	GB5782-M12×45	HEXANGULAR BOLT	4
18	CT-Y-0100008	HINGE ELBOW Φ8	2
19	CT-Y-0100007	HINGE ELBOW Φ6 R1/8"	2
20	CT-Y-5000005	PROTECTIVE COVER	4
21	GB93-12	STANDARD SPRING WASHER	4

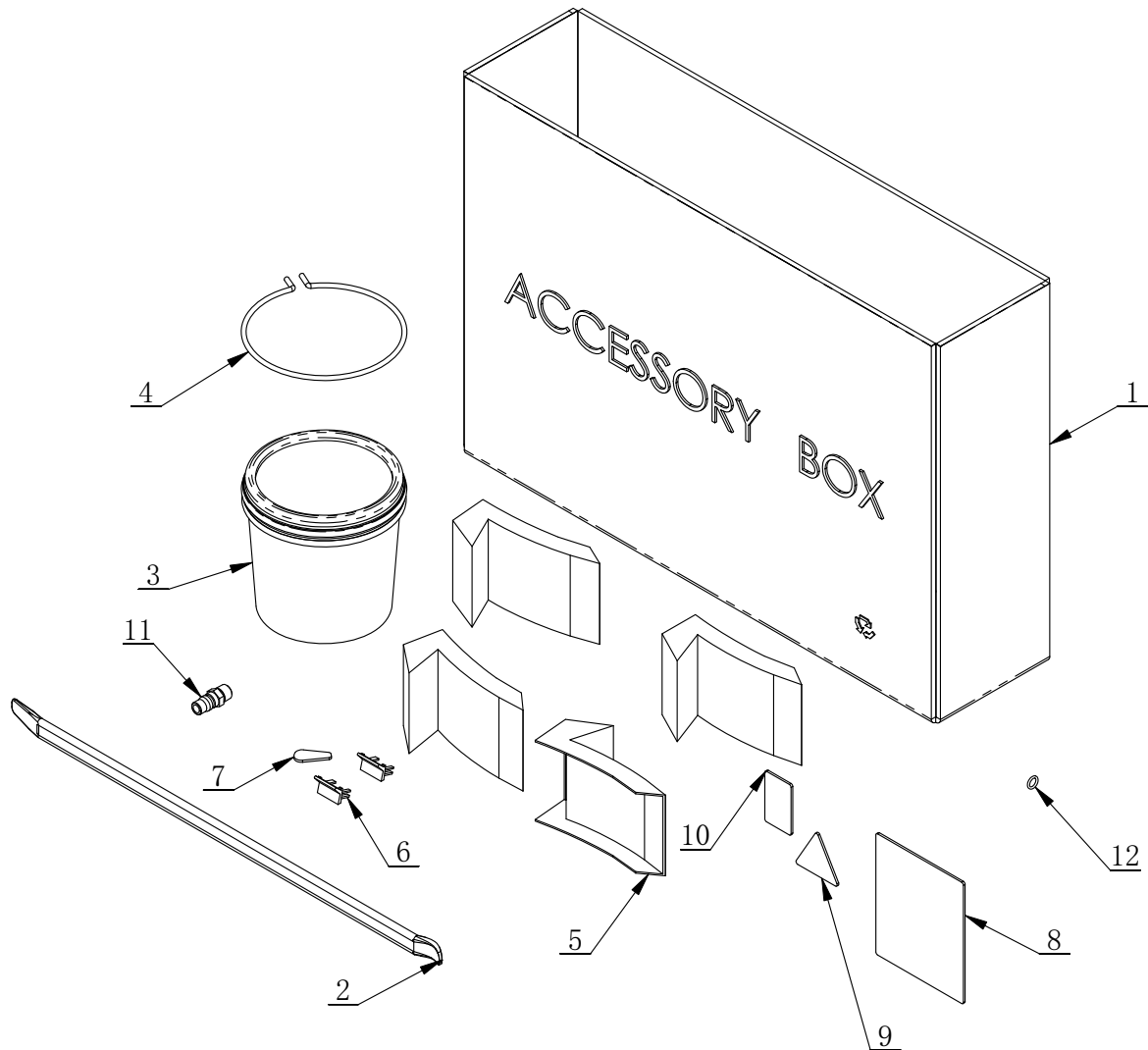


ITEM	PART. No	DESCRIPTION.	QT. Y
1	CT-Y-4120004	CYLINDER FRONT COVER	1
2	CT-Y-5010001	CYLINDER 80MM	1
3	CT-Y-5010002	SHAFT-CLYDR	1
4	CT-Y-4120005	CAP-BASE, CYLNDR	1
5	CT-Y-5010003	BOLT	4
6	GB893. 1-30	ELASTIC RETAINING RING A-TYPE	1
7	GB889. 1-M8	1-TYPE PREVAILING TORQUE TYPE HEXAGON LOCK NUT	4
8	GB95-12	FLAT WASHER	1
9	GB889. 1-M12	1-TYPE PREVAILING TORQUE TYPE HEXAGON LOCK NUT	1
10	JH1 2010	BEARING-SLIDE	1
11	CT-Y-4121000	CYCLINDER SEALING PARTS ASSEMBLY	1
11.1	GB3452. 1-75×2. 65-G	HYDRAULIC-PNEUMATIC RUBBER O-RING G TYPE	2
11.2	CT-Y-0160007	SEAL-ROD, CYLNDR	1
11.3	GB3452. 1-20×2. 65	HYDRAULIC-PNEUMATIC RUBBER O-RING G TYPE	1
11.4	CT-Y-4120006	PISTON	1

## ADJUSTING VALVE



ITEM	PART. No	DESCRIPTION.	QT. Y
1	H-40-1600002	VALVE HOLDER	1
2	FPL 6-02	MALE ELBOW	1
3	H-40-1600001	PRESSURE ADJUST VALVE	1
4	FPL 8-02	INSERT ELBOW $\Phi 8$ , R1/4	1
5	FPS 01	PLUG MAIN BLOCK	2



ITEM	PART. No	DESCRIPTION.	QT. Y
1	C-54-8000002	ACCESSORY BOX	1
2	C-54-8000003	20INCH CROWBAR	1
3	C-54-8100000	GREASE CONTAINER	1
4	C-54-8000004	BRACKET	1
5	C-54-8000005	CLAMP PROTECTION COVER	4
6	C-54-8000006	SHEATH	2
7	C-54-8000007	PLASTIC COVER	1
8	C-54-8000008	USER MANUAL	1
9	C-54-8000009	PASS CARD	1
10	C-54-8000010	GUARANTEE	1
11	C-54-8000011	AIR SUPPLY CONNECTOR	1
12	GB / T 3452.1-2005 8x2.65	HYDRAULIC-PNEUMATIC RUBBER O-RING G TYPE	1