

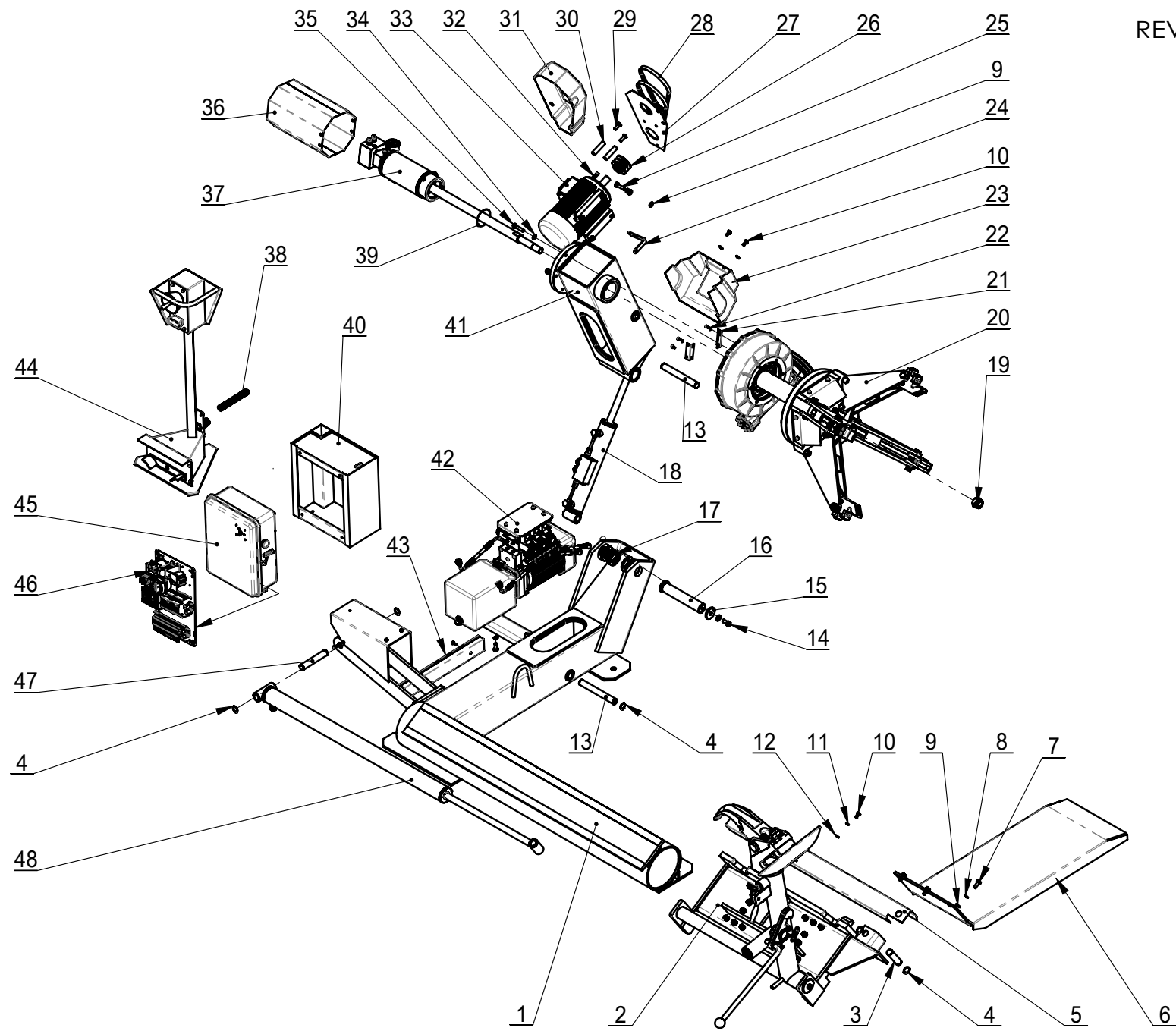
Parts List

LC588S

Version: 15A-01-2015.07.08

REVISION 15A-01

TC-12-1000000



TC-12-1000000

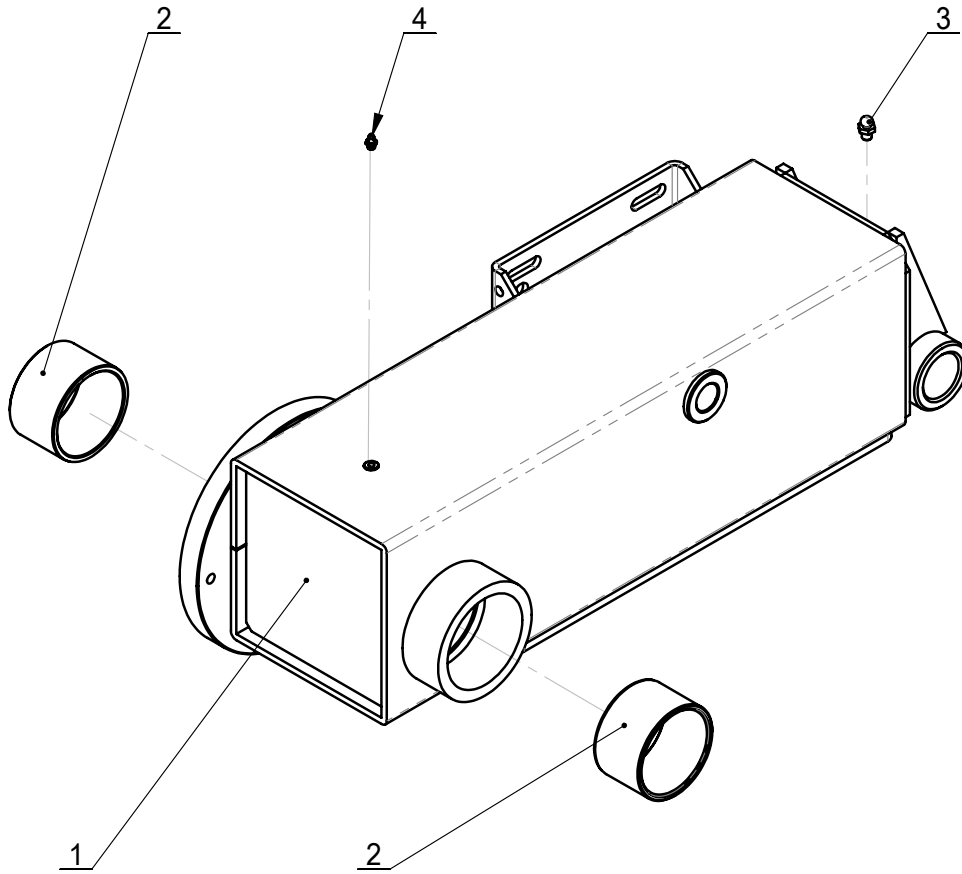
REVISION 15A-01

ITEM	PART. No	DESCRIPTION.	QT. Y
1	TC-12-1100000	BODY ASSEMBLE WELDING	1
2	TC-12-1200000	RACK AND TIRE PRESS TOOL ASSEMBLY	1
3	TC-10-1000005	SHORT PIN SHAFT	1
4	GB894. 1- 24	SHAFT ELASTIC RETAINING RING A24	8
5	TC-10-1020000	TRAIL OIL TANK COVER ASSEMBLY	1
6	TC-10-1500000	TRAIL ASSEMBLY	1
7	GB5783-M10×25	HEXANGULAR BOLT	5
8	GB93-10	STANDARD SPRING WASHER	10
9	GB95-10	FLAT WASHER	16
10	GB5783-M8×16	HEXANGULAR BOLT	5
11	GB93-8	STANDARD SPRING WASHER	3
12	GB95-8	FLAT WASHER	5
13	TC-10-1000002	VERTICAL MOVABLE ARM LINK SHAFF	2
14	GB5783-M12×25	HEXANGULAR BOLT	1
15	TC-10-1300002	CIRCULAR GUIDERAIL WAHER	1
16	TC-10-1000016	VERTICAL MOVABLE ARM SUPPORT	1
17	TC-10-1000003	WEAR PAD 1	2
	TC-10-1000004	WEAR PAD 2	4
18	TC-10-1700000	VERTICAL MOVEMENT OIL TANK	1
19	GB889. 2-M24×2	HEXAGON LOCK NUT	1
20	TC-10-1400000	RIM CLAMPING DEVICE	1
21	TC-10-1000007	SUPPORT ANGLE IRON	2
22	GB70- M6×10	INNER HEXA CYLINDRICAL SCREW	4
23	TC-10-1000033	VERTICAL MOVABLE ARM BACK COVER	1
24	TC-10-1000030	BRACKET	1
25	GB5783-M10×40	HEXANGULAR BOLT	4
26	TC-10-1000014	SMALL PULLEY	1
27	TC-10-1000010	MOTOR PULLEY COVER PLATE	1
28	TC-10-1000017	COMMON V-BELT-A710	2
29	GB819. 1-M10×30-H	CROSS COUNTERSUNK SCREW	2
30	TC-10-1000015	CONNECTING PIN	2
31	TC-10-1000012	PULLEY COVER	1
32	GB1096-8×7×40	COMMON FLAT KEY	1
33	TC-10-1000027	3-PHASE ASYNCHRONOUS MOTOR 380V	1
34	TC-20-1230014	FLAT WASHER	6
35	GB5783-M10×40	HEXANGULAR BOLT	6
36	TC-10-1010000	MAINSHAFT OIL TANK COVER ASSEMBLY	1

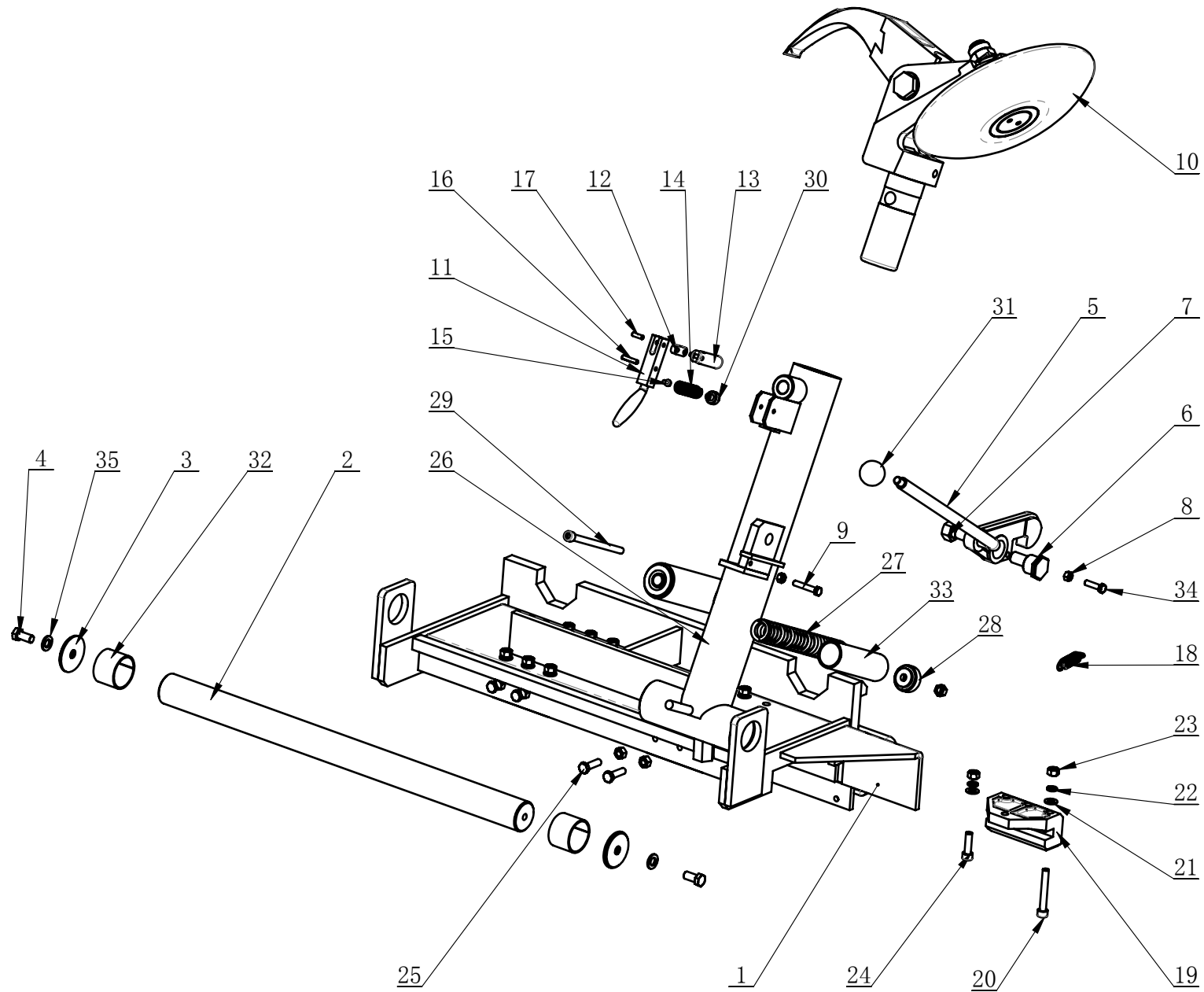
TC-12-1000000

REVISION 15A-01

ITEM	PART. No	DESCRIPTION.	QT. Y
37	TC-10-1600000	MAINSHAFT OIL TANK AND OIL GUIDE	1
38	TC-10-2360010	OPERATION ELECTRICAL LINE	1
39	TC-10-1000024	O-RING	1
40	TC-10-1900000	TOOL BOX	1
41	TC-10-1200000	VERTICAL ARM ASSEMBLY	1
42	TC-10-1030000	HYDRAULIC STATION ASSEMBLY	1
43	TC-10-1000026	WIRING CHANNEL 60*30	1
44	TC-10-1B00000	CONSOLE	1
45	TC-10-2131311	ELECTRICAL BOX	1
46	TC-10-2231380	ELECTRICAL CONTROL CABINET	1
47	TC-10-1000006	LONG PIN SHAFT	1
48	TC-10-1800000	TRAIL OIL TANK ASSEMBLY	1
49			
50			
51			
52			
53			
54			
55			
56			
57			
58			
59			
60			
61			
62			
63			
64			
65			
66			
67			
68			
69			
70			
71			
72			
73			



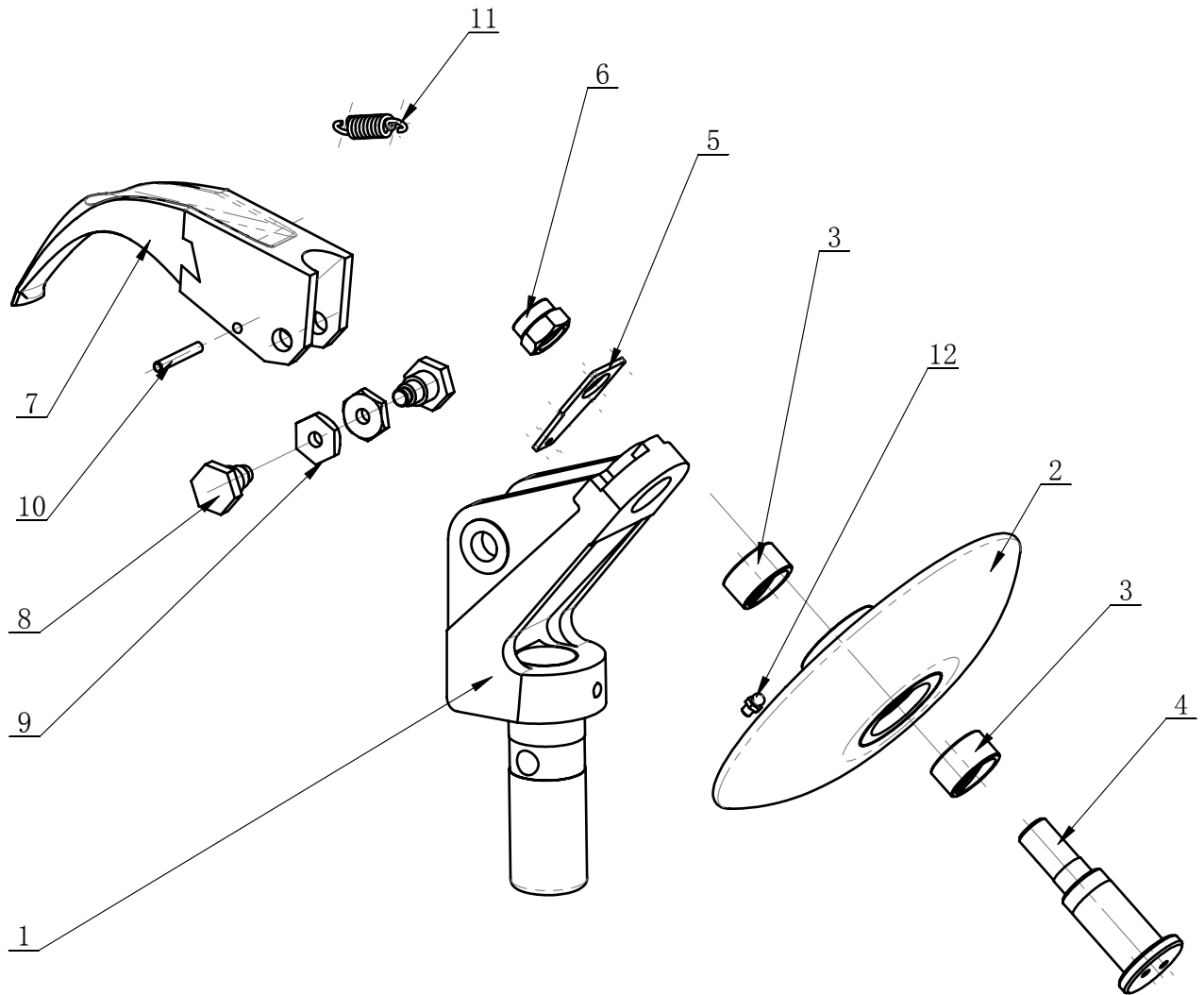
ITEM	PART.No	DESCRIPTION.	QT.Y
1	TC-10-1210000	WELDING VERTICAL MOVABLE ARM	1
2	TC-10-1200001	BEARING BUSHING	2
3	TC-40-1200023	OIL FILLING NOZZLE	1
4	TC-10-8400006	OIL CUP M6	1



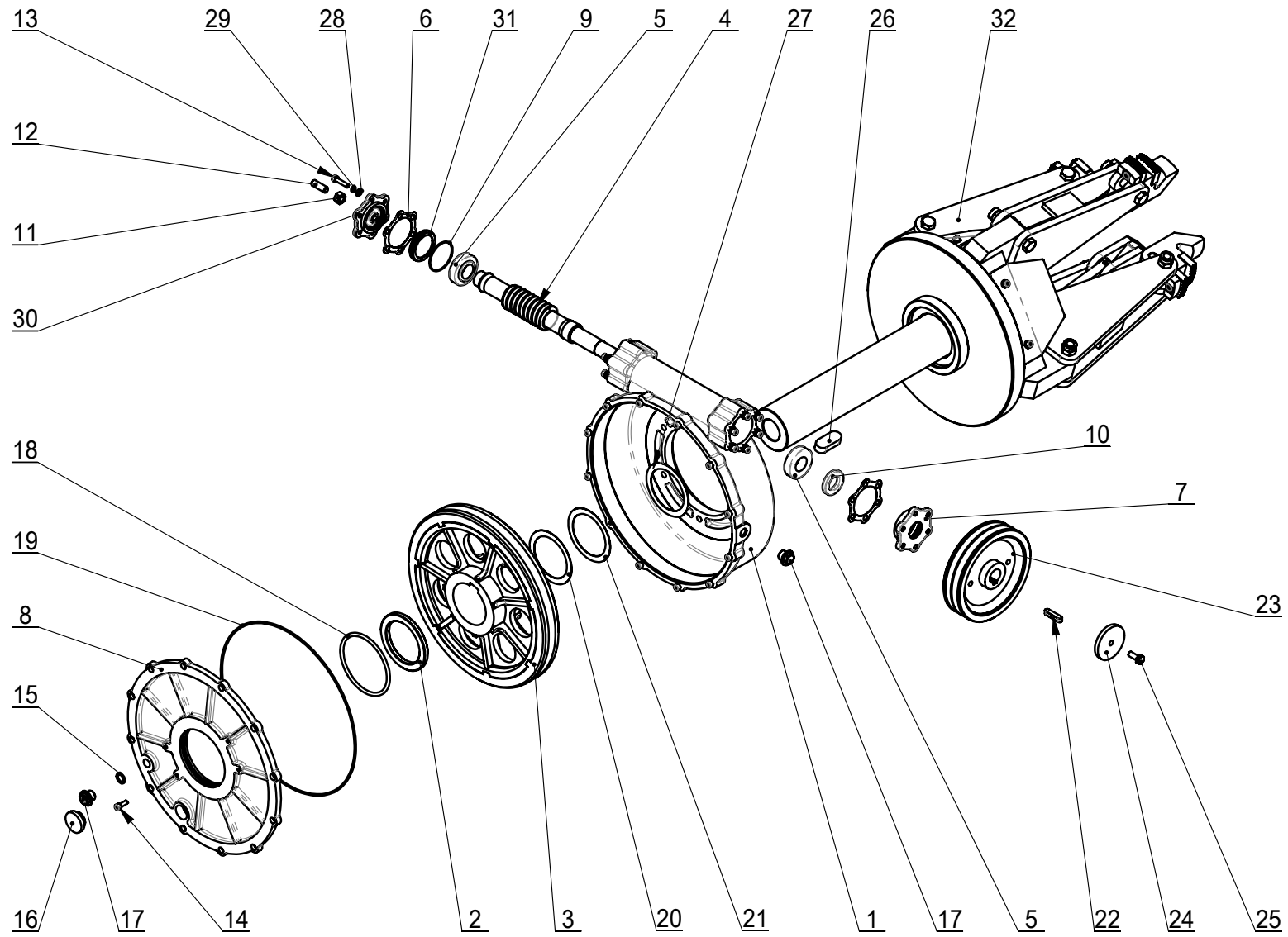
TC-12-1200000

REVISION 15A-01

ITEM	PART. No	DESCRIPTION.	QT. Y
1	TC-12-1210000	BRACKET ASSEMBLY WELDING	1
2	TC-11-1200001	TRAILER CIRCULAR GUIDERAIL	1
3	TC-11-1200002	CIRCULAR GUIDERAIL WAHER	2
4	GB5783-M12×25	HEXANGULAR BOLT	2
5	TC-11-1240000	HOOK	1
6	TC-10-1300010	ECCENTRIC SHAFT	1
7	GB6171-M18×1.5	1-TYPE HEXA NUT	1
8	GB41-M8	HEXANGULAR NUT	2
9	GB5783-M8×45	HEXANGULAR BOLT	1
10	TC-10-1340000	DOUBLE TOOL ASSEMBLY	1
11	TC-10-1300004	FIX LOCK PRESSER	1
12	TC-10-1300005	CONNECT PLATE	1
13	TC-10-1300006	PIN-FIX	1
14	TC-10-1300008	PRESS SPRING	1
15	GB65-M6×10	SLOTTED CYLINDRICAL SCREW	1
16	GB879. 2-6×30	ELASTIC CYLINDRICAL PIN,	1
17	GB879. 2-6×20	ELASTIC CYLINDRICAL PIN,	2
18	TC-10-1300009	EXTENSION SPRING	1
19	TC-10-1300001	GUIDERAIL SUPPORT	4
20	GB70. 1-M10×70	INNER HEXA CYLINDRICAL	12
21	GB95-10	FLAT WASHER	16
22	GB93-10	STANDARD SPRING WASHER	16
23	GB41-M10	HEXANGULAR NUT	21
24	GB70. 1-M10×35	INNER HEXA CYLINDRICAL	4
25	GB5783-M10×35	HEXANGULAR BOLT	4
26	TC-12-1240000	TOOL SUPPORT	1
27	TC-12-1200001	PRESS SPRING	1
28	TC-11-1200004	INDENTER	1
29	GB70. 1-M10×150	INNER HEXA CYLINDRICAL	1
30	TC-10-1300007	POSITION STUD	1
31	TC-10-1300015	HANDLE (JB272. 1-M12*25)	1
32	TC-11-1200003	SELF-LUBRICATING BEARINGS	2
33	TC-12-1220000	WITHIN THE CYLINDER WELDING	1
34	GB5783-M8×30	HEXANGULAR BOLT	1
35	GB95-12	FLAT WASHER	2



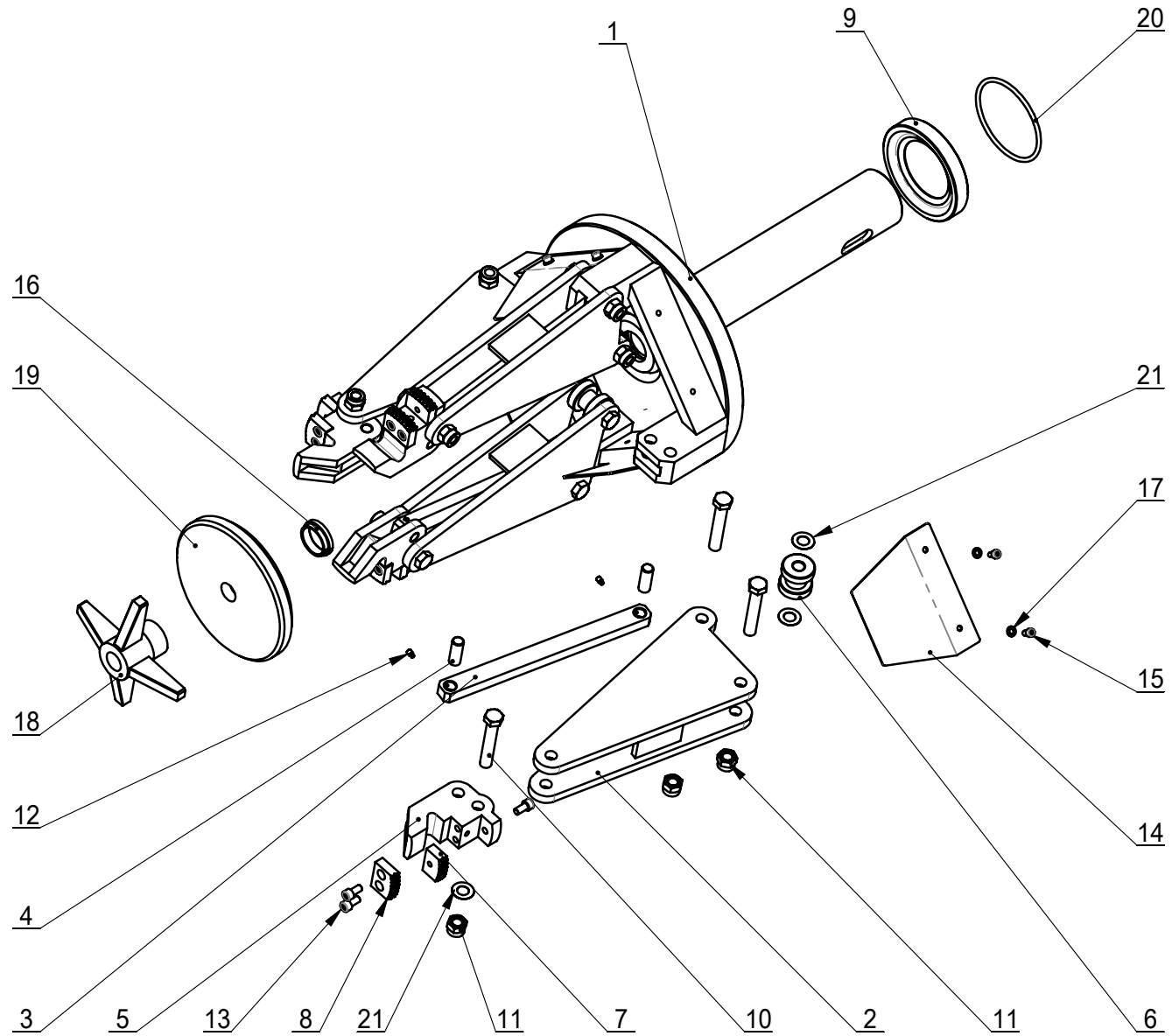
ITEM	PART. No	DESCRIPTION.	QT. Y
1	TC-10-1340100	DOUBLE TOOL ASSEMBLY	1
2	TC-10-1341000	TURNTABLE	1
3	TC-10-1340010	BEARING	2
4	TC-10-1340006	SPINDLE	1
5	TC-10-1340008	EXTENSION SPRING CONNECT PLATE	1
6	GB/T 889.1 - M27	LOCK NUT	1
7	TC-10-1340001	FINGER TOOL	1
8	TC-10-1340003	FIX SCREW	2
9	TC-10-1340004	NUT	2
10	TC-10-1340002	PIN	1
11	TC-10-1340005	EXTENSION SPRING	1
12	TC-40-1200023	OIL FILLING NOZZLE	1

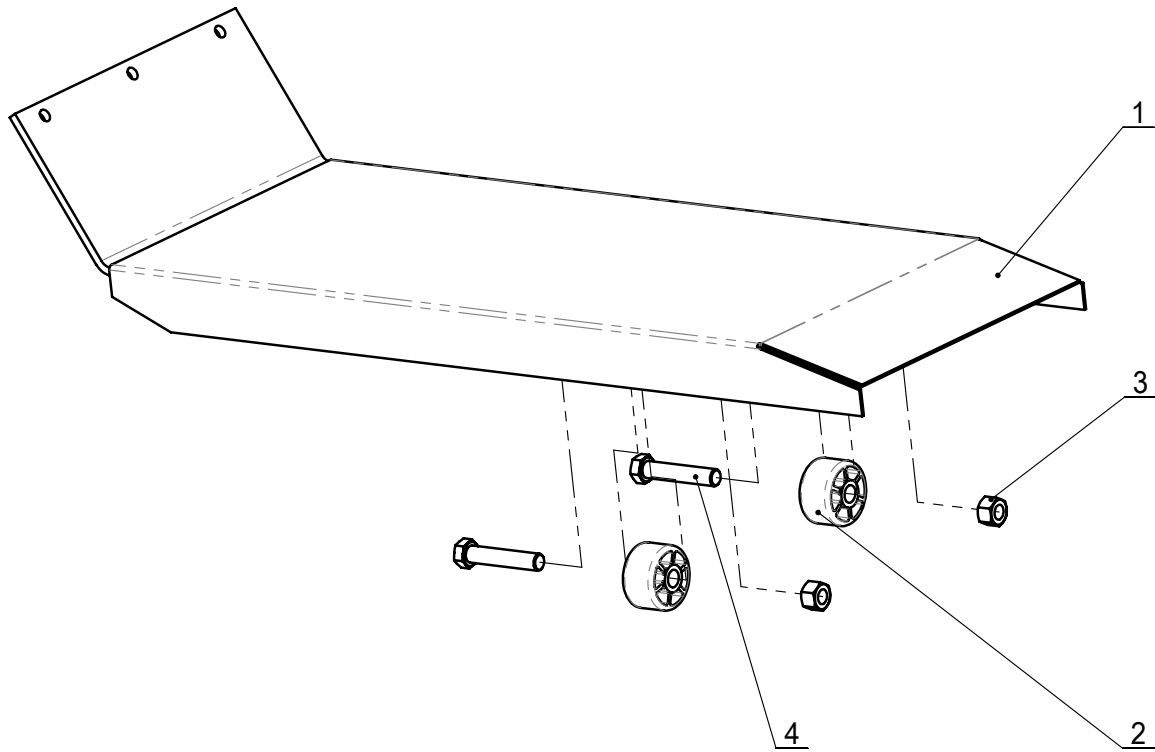


TC-10-1400000

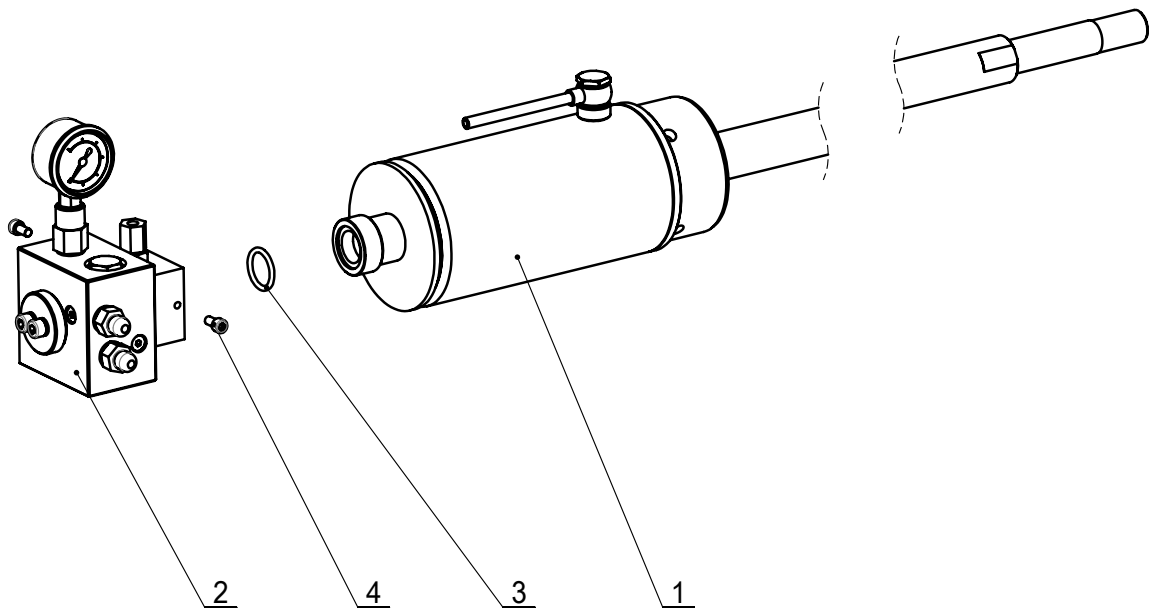
REVISION 15A-01

ITEM	PART. No	DESCRIPTION.	QT. Y
1	TC-10-1400002	WORM CASE	1
2	TC-10-1400001	MAIN SHAFT ADJUSTING WASHER	1
3	TC-10-1410000	WORM	1
4	TC-10-1400007	WORM SHAFT	1
5	GB297-94 30205	CONIC ROLLING BEARING	2
6	TC-10-1400008	PAPER WASHER	2
7	TC-10-1400009	WORM CASE FRONT COVER	1
8	TC-10-1400003	WORM CASE COVER	1
9	GB3452.1- 48.7x1.8	RING	1
10	TC-10-1400015	SEALING WASHER W42X25X7	1
11	GB41-M10	HEXANGULAR NUT	1
12	GB77-M10×30	INNER HEXA FLAT TERMINUS	1
13	GB70.1-M6×25	INNER HEXA CYLINDRICAL	12
14	GB70.1-M6×16	INNER HEXA CYLINDRICAL	12
15	GB - 13.2×2.65-G	O-RING G 13.2×2.65-G	2
16	TC-10-1400014	OIL DISPLAY M27X1.5	1
17	TC-10-1400013	BOLT	2
18	GB3452.1-100×5.3-G	HYDRAULIC-PNEUMATIC RUBBER	1
19	GB3452.1 300x2.65	RING	1
20	TC-10-1400005	WASHER	1
21	TC-10-1400016	WASHER	1
22	GB1096-8×7×36	COMMON FLAT KEY	1
23	TC-10-1400010	LARGE PULLEY	1
24	TC-10-1400011	PULLEY RETAINING RING	1
25	GB5783-M8×20	HEXANGULAR BOLT	1
26	GB1096-20X50	FLAT WASHER 20*50	1
27	TC-10-1400004	WASHER	1
28	GB95-6	FLAT WASHER	12
29	GB93-6	STANDARD SPRING WASHER	12
30	TC-10-1400017	WORM CASE REAR COVER	1
31	TC-10-1400018	ADJUST WASHER	1
32	TC-10-1420000	MAIN SHAFT AND CLAMP	1

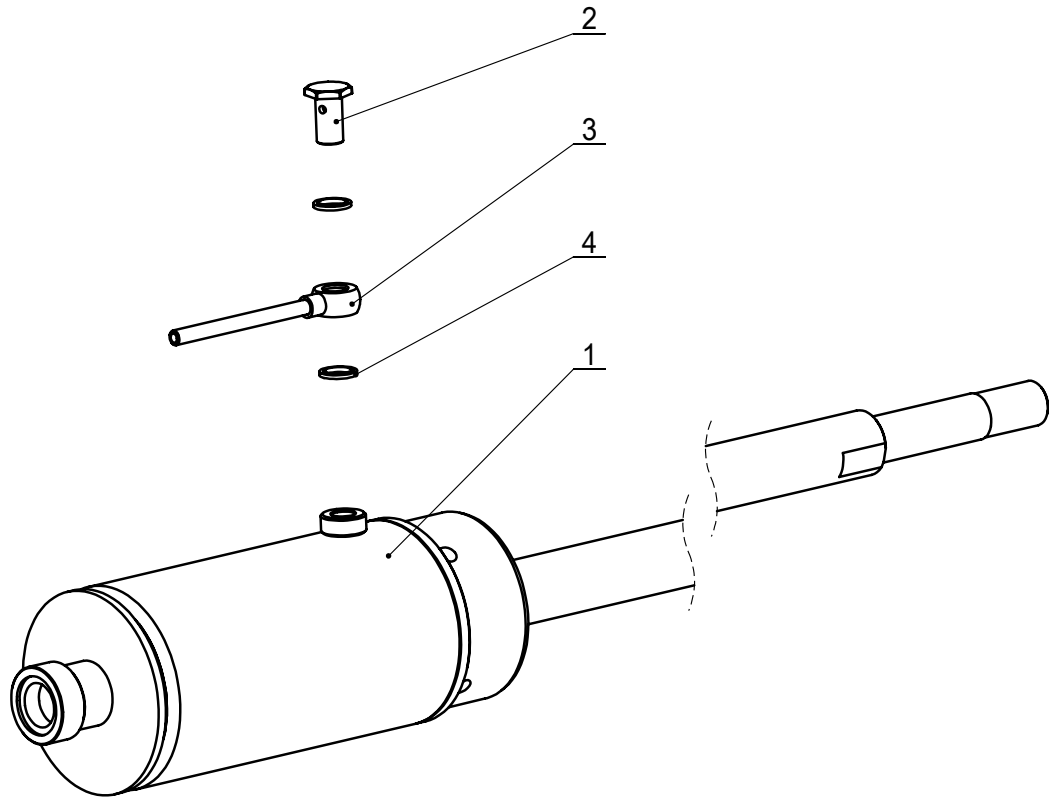




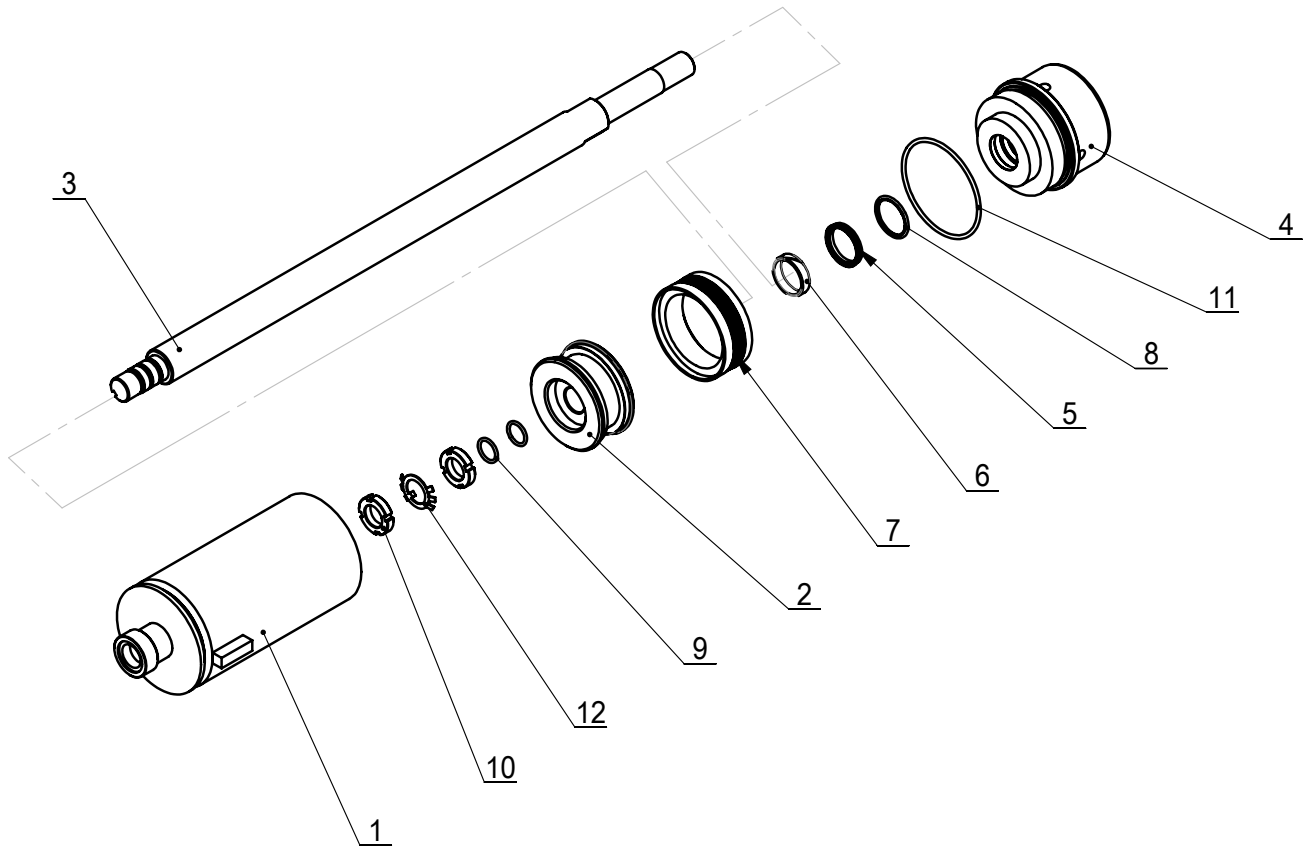
ITEM	PART.No	DESCRIPTION.	QT.Y
1	TC-10-1510000	TRAILER ASSEMBLY WELDING	1
2	TC-10-1500001	ROLLING WHEEL	2
3	GB41-M16	HEXANGULAR NUT	2
4	GB5782-M16×80	HEXANGULAR BOLT	2



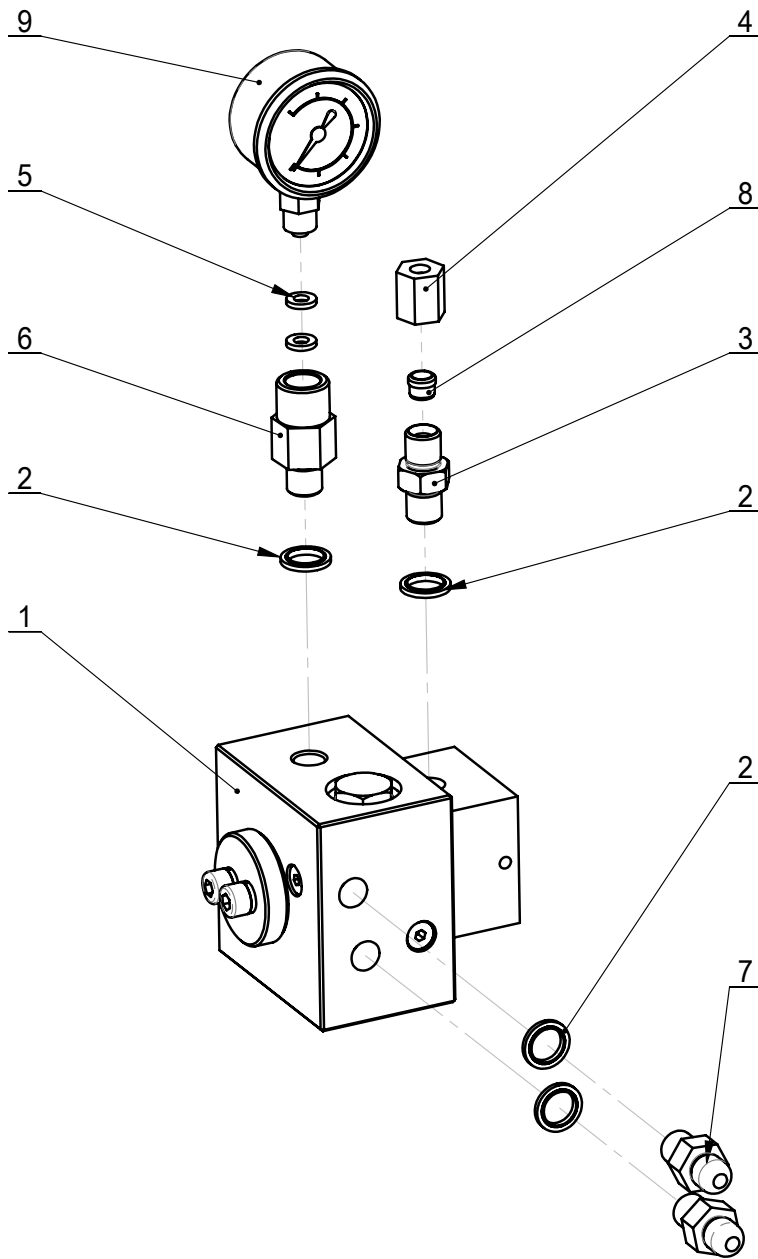
ITEM	PART.No	DESCRIPTION.	QT.Y
1	TC-10-1610000	MAIN SHAFT OIL TANK ASSEMBLY	1
2	TC-10-1620000	OIL GUIDE ASSEMBLY PARTS	1
3	GB3452.1 25×3.55	O-RING G 25×3.55-G	1
4	GB70.1-M6×12	INNER HEXA CYLINDRICAL SCREW	2



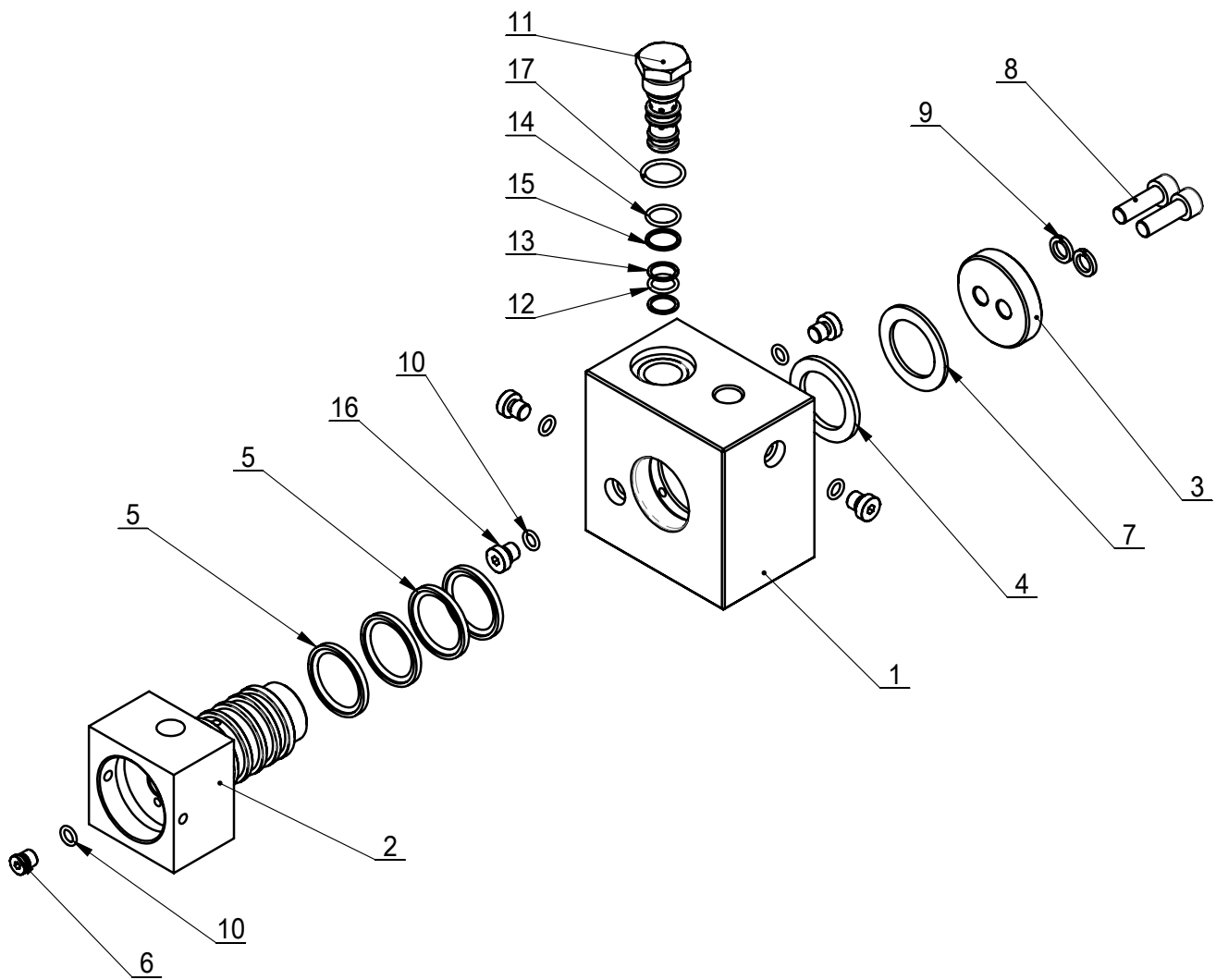
ITEM	PART.No	DESCRIPTION.	QT.Y
1	TC-10-1611000	MAIN SHAFT OIL TANK ASSEMBLY GENERAL	1
2	TC-10-1610001	OIL PIPE JOINT	1
3	TC-10-1612000	OIL PIPE JOINT ASSEMBLY WELDING	1
4	JB982-14	SEALING COMPOUND	2



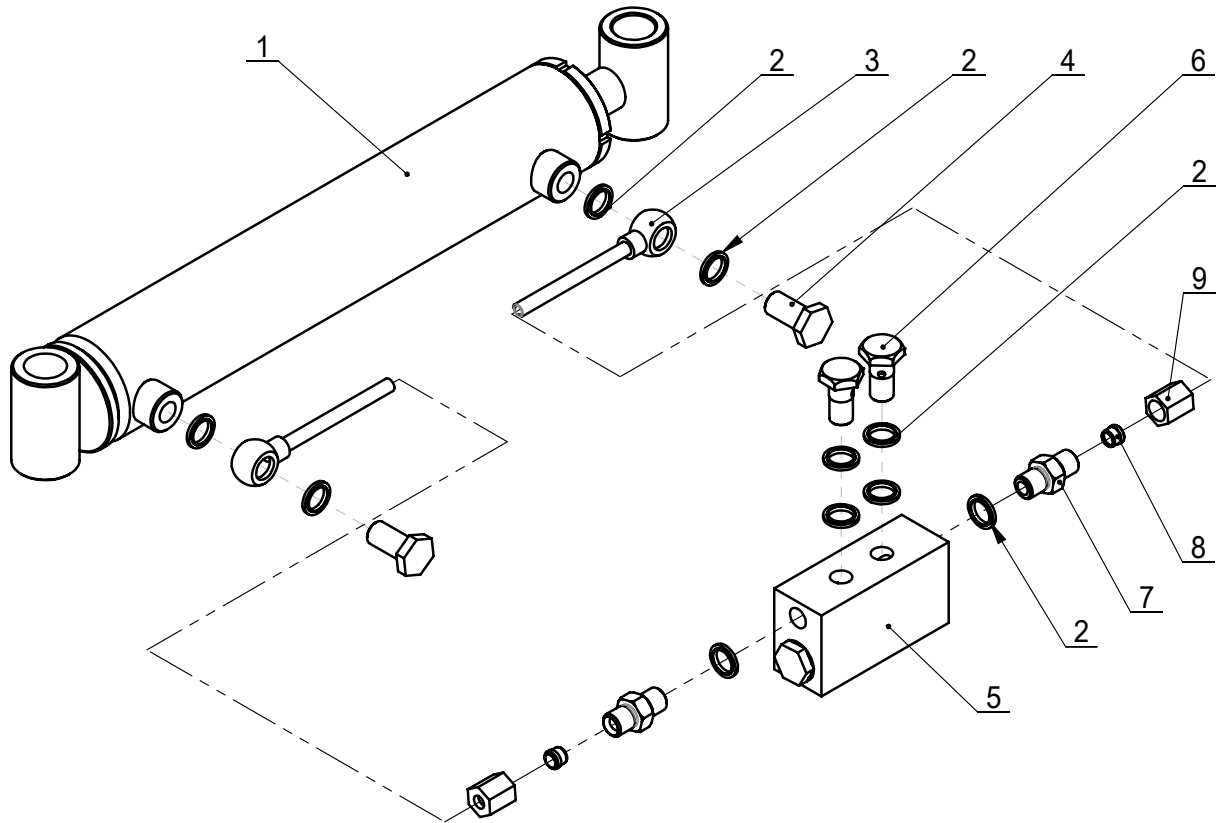
ITEM	PART.No	DESCRIPTION.	QT.Y
1	TC-10-1611100	MAIN SHAFT OIL TANK BODY	1
2	TC-10-1611001	PISTON	1
3	TC-10-1611008	PISTON ROD	1
4	TC-10-1611003	OIL TANK FRONT COVER	1
5	TC-10-1611004	SUPPORT RING	1
6	TC-10-1611005	WEAR-RESISTENCE RING GT-9.7B	1
7	TC-10-1611006	SEALING RING	1
8	TC-10-1611007	RING G SJ0350L	1
9	GB3452.1-20×2.65-G	HYDRAULIC-PNEUMATIC RUBBER O-RING	2
10	GB810-M24×1.5	SMALL CIRCULAR NUT	2
11	GB3452.1- 95×3.55	O-RING G 95×3.55-G	1
12	GB858-24	STOP WASHER FOR ROUND NUT	1



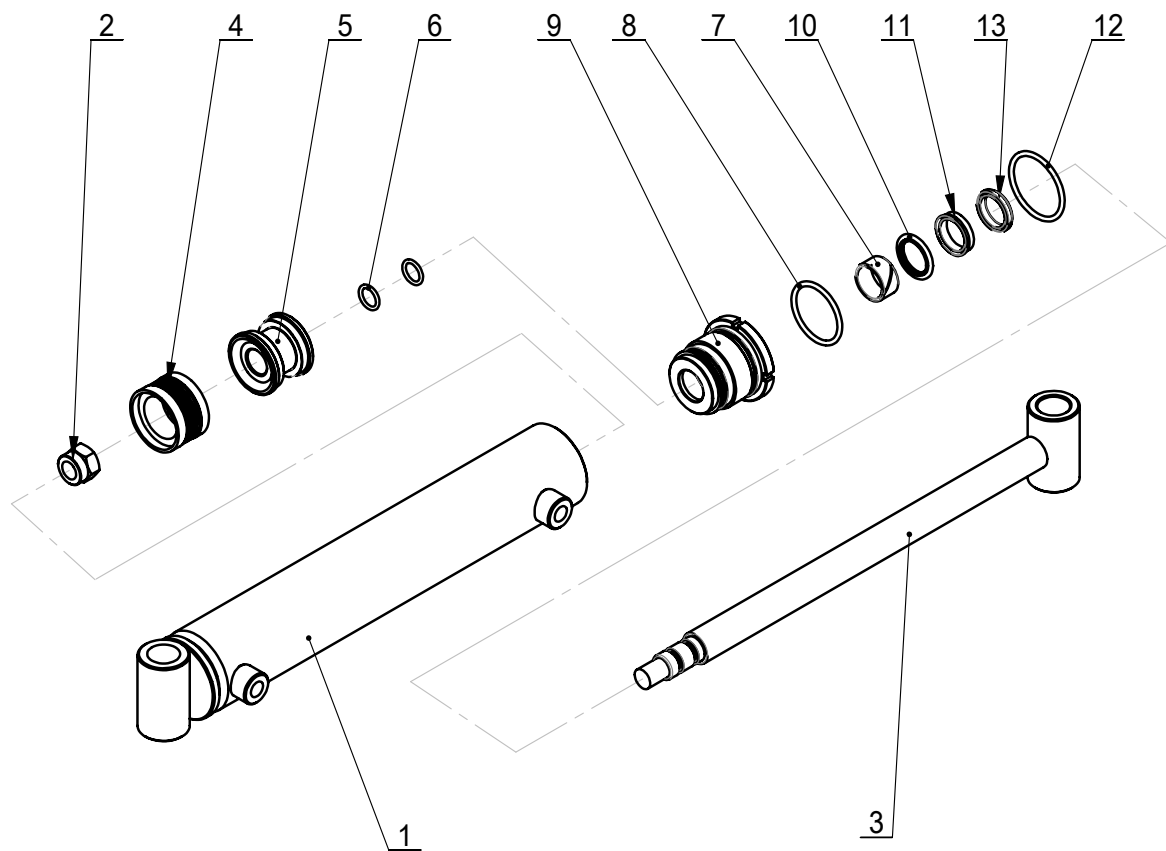
ITEM	PART.No	DESCRIPTION.	QT.Y
1	TC-10-1621000	OIL GUIDE ASSEMBLY	1
2	JB982-14	SEALING COMPOUND	4
3	TC-10-1620001	OIL PIPE DOUBLESREW ROD	1
4	TC-10-1620002	NUT-LOCK	1
5	TC-10-1620003	AIR REGULATOR WASHER	2
6	TC-10-1620004	PRESSURE GAUGE JOINT	1
7	TC-10-1620005	OIL ROUTE DOUBLE SCREW ROD	2
8	TC-10-1620006	CLAMP BUSHING	1
9	TC-10-1620007	PRESSURE GAUGE	1



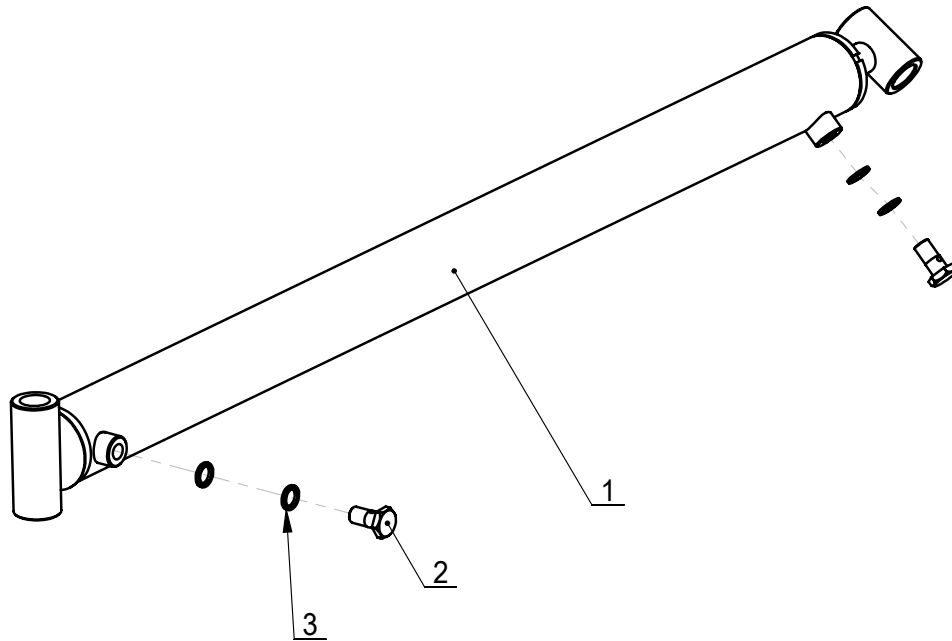
ITEM	PART.No	DESCRIPTION.	QT.Y
1	TC-10-1621001	OIL GUIDE	1
2	TC-10-1621002	VALVE	1
3	TC-10-1621003	PLATE	1
4	TC-10-1621004	BUSHING WASHER	1
5	TC-10-1621005	X-RING 31.42*2.62	4
6	TC-10-1621007	PLUG	1
7		BUSHING	1
8	GB70.1-M8*25	INNER HEXA CYLINDRICAL SCREW	2
9	GB93-8	STANDARD SPRING WASHER	2
10	GB3452.1-6.3*1.8-G	HYDRAULIC-PNEUMATIC RUBBER O-RING G TYPE	5
11	TC-10-1621100	VALVE	1
12	GB3452.1-10.6*1.8-G	HYDRAULIC-PNEUMATIC RUBBER O-RING G TYPE	1
13	TC-10-1621010	CIRCLIP	2
14	GB3452.1-12.5*1.8-G	HYDRAULIC-PNEUMATIC RUBBER O-RING G TYPE	1
15	TC-10-1621009	CIRCLIP	1
16	TC-10-1621008	PLUG	4
17	TC-10-1621011	MAIN SHAFT O-RING	1



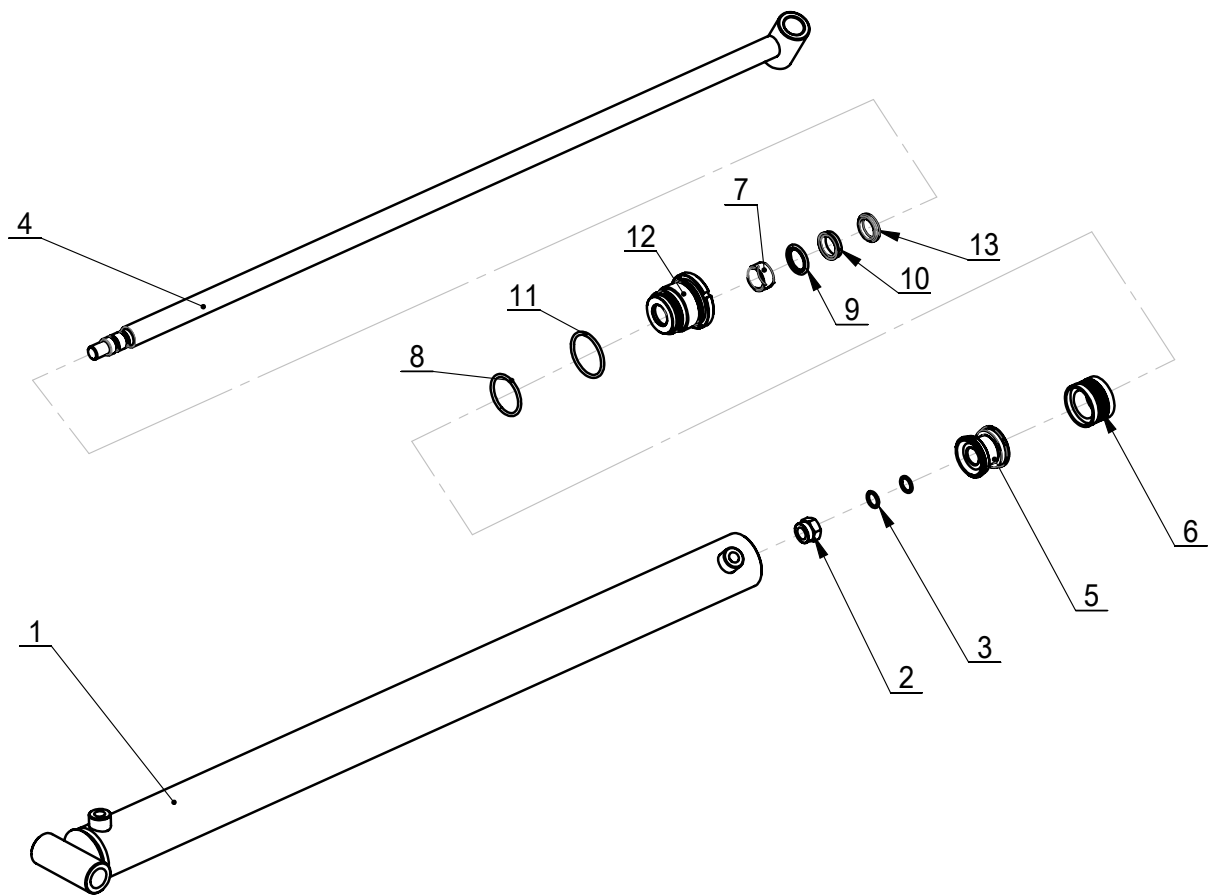
ITEM	PART.No	DESCRIPTION.	QT.Y
1	TC-10-1720000	VERTICAL OIL TANK	1
2	JB982-14	SEALING COMPOUND	10
3	TC-10-1710000	OIL PIPE JOINT NOZZAL ASSEMBLY WELDING	2
4	TC-10-1700001	NOZZAL	2
5	TC-10-1700003	HYDRAULIC LOCK	1
6	TC-10-1700002	OIL TUBE CONNECTOR	2
7	TC-10-1620001	OIL PIPE DOUBLESCREW ROD	2
8	TC-10-1620006	CLAMP BUSHING	2
9	TC-10-1620002	NUT-LOCK	2



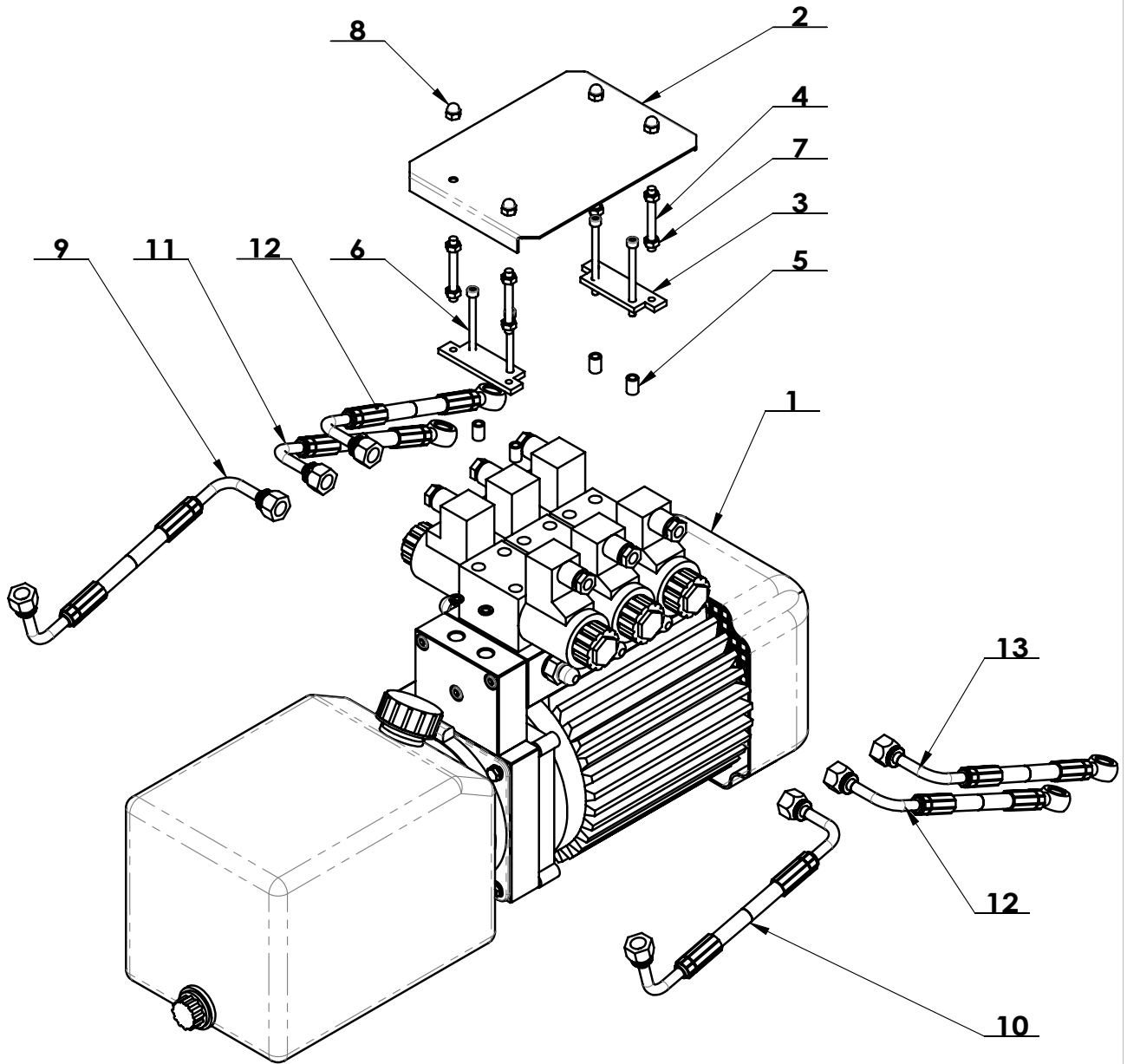
ITEM	PART.No	DESCRIPTION.	QT.Y
1	TC-10-1721000	OIL TANK BODY	1
2	GB889.2-M16×1.5	HEXAGON LOCK NUT	1
3	TC-10-1722000	PISTON ROD ASEMBLY WELDING PART	1
4	TC-10-1720003	ASSEMBLY SEALING	1
5	TC-10-1720001	PISTON	1
6	GB3452.1-15×2.65	O-RING G 15×2.65-G	2
7	TC-10-1720006	SUPPORT RING 25X30X5.6	1
8	GB3452.1-43.7×3.55-G	HYDRAULIC-PNEUMATIC RUBBER O-RING	1
9	TC-10-1720002	THE END COVER OF THE OIL CYLINDER	1
10	TC-10-1720007	Φ25 LADDER LETTER	1
11	TC-10-1720005	U SEALING RING 25x33x8.2	1
12	GB3452.1-48.7×3.55	O-RING G 48.7×3.55-G	1
13	TC-10-1720004	DUST-PROOF RING LBH-25	1



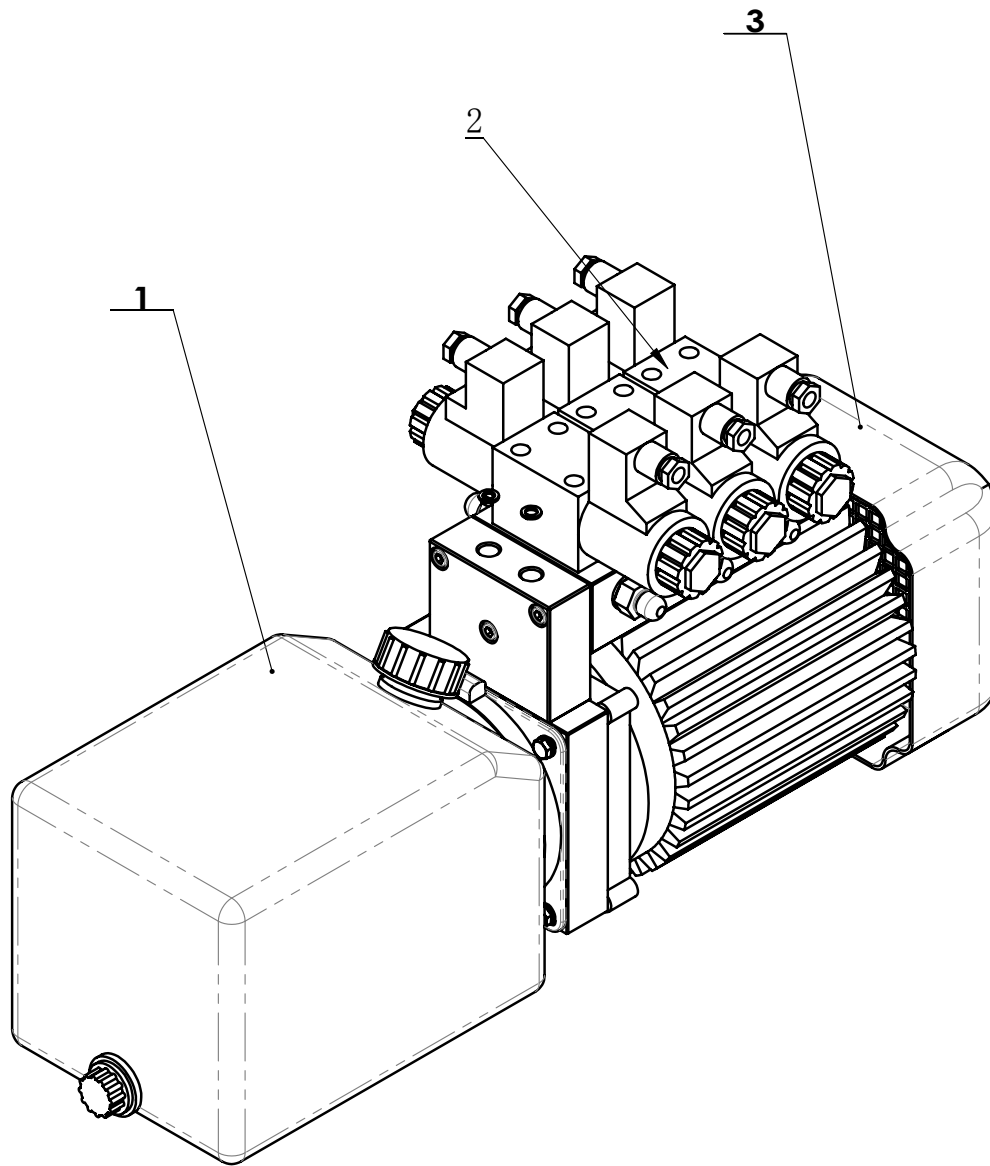
ITEM	PART.No	DESCRIPTION.	QT.Y
1	TC-10-1810000	BRACKET OIL TANK	1
2	TC-10-1700002	OIL TUBE CONNECTOR	2
3	JB982-14	SEALING COMPOUND	4



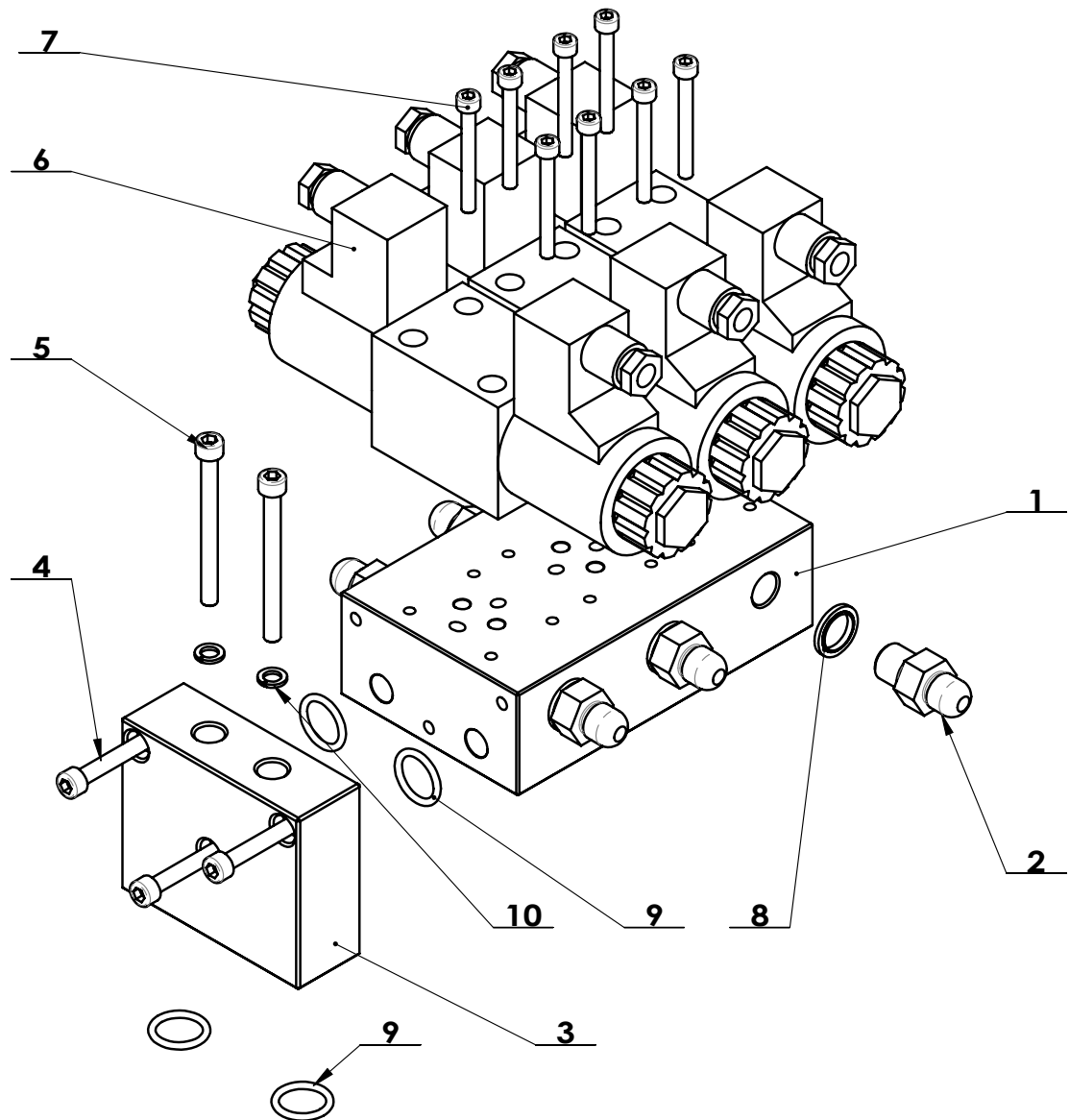
ITEM	PART.No	DESCRIPTION.	QT.Y
1	TC-10-1811000	OIL TANK BODY	1
2	GB889.2-M16×1.5	HEXAGON LOCK NUT	1
3	GB3452.1-15x2.65	RING	2
4	TC-10-1812000	PISTON ROD ASSEMBLY WELDING	1
5	TC-10-1720001	PISTON	1
6	TC-10-1720003	ASSEMBLY SEALING	1
7	TC-10-1720006	SUPPORT RING 25X30X5.6	1
8	GB3452.1-43.7×3.55-G	HYDRAULIC-PNEUMATIC RUBBER O-RING	1
9	TC-10-1720007	Φ25 LADDER LETTER	1
10	TC-10-1720005	U SEALING RING 25x33x8.2	1
11	GB3452.1-48.7×3.55	O-RING G 48.7×3.55-G	1
12	TC-10-1720002	THE END COVER OF THE OIL CYLINDER	1
13	TC-10-1720004	DUST-PROOF RING LBH-25	1



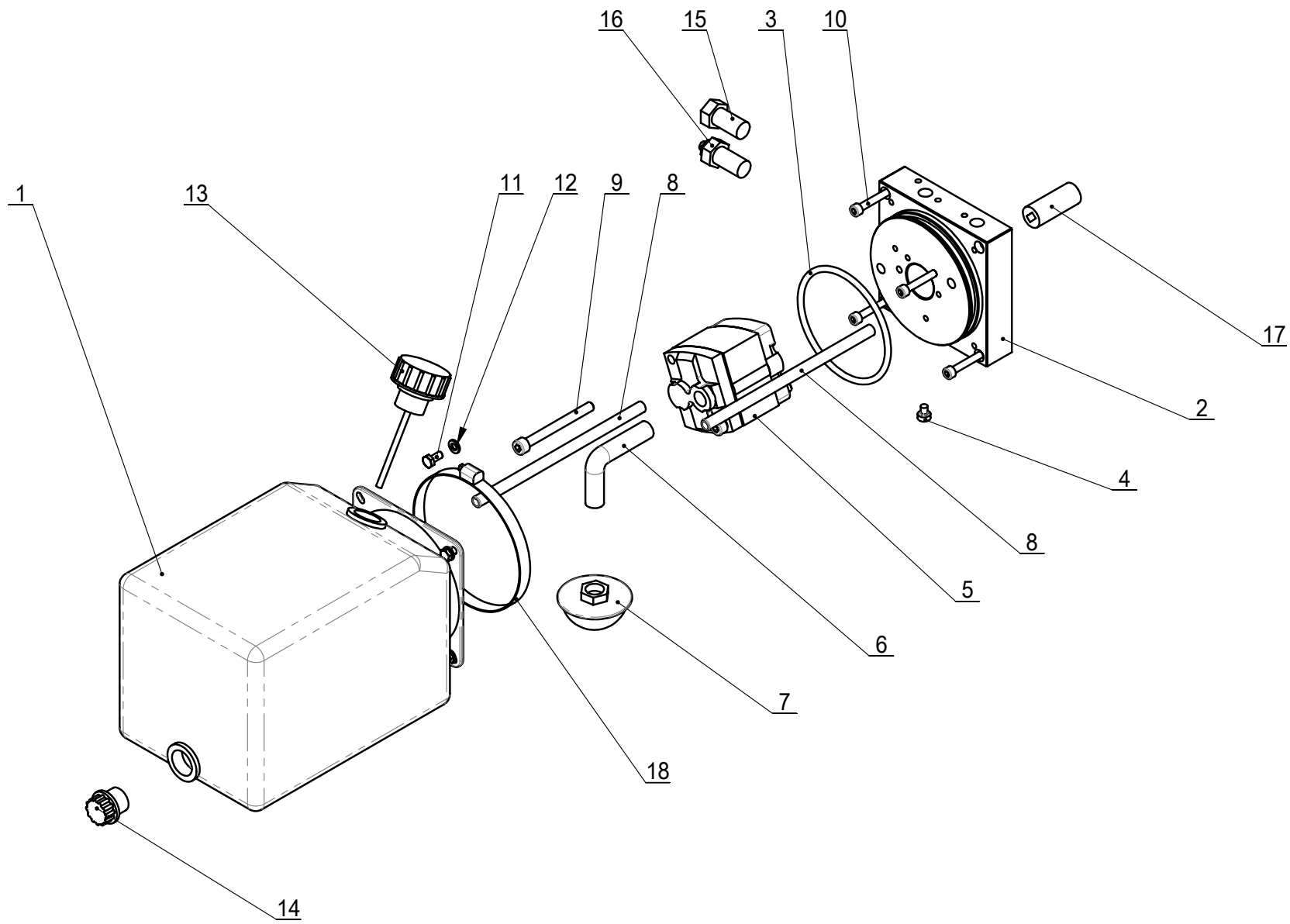
ITEM	PART. No	DESCRIPTION.	QT. Y
1	TC-10-1031000	PUMPING STATION ASSEMBLY	1
2	TC-10-1030001	ELECTROMAGNETISM VALVE COVER	1
3	TC-10-1030002	ELECTROMAGNETISM VALVE COVER SUPPORT	2
4	TC-10-1030003	DORBLE ROD SCREW	4
5	TC-10-1030004	WASHER	4
6	GB70- M5×65	HEXAGONULAR BOLT	4
7	GB6170-M6	HEXANGULAR NUT 1-TYPE	8
8	GB923-M6	CAP NUT	4
9	TC-10-1000023	MAIN SHAFT OIL TANK PIPE (1200)	1
10	TC-10-1000022	MAIN SHAFT OIL TANK PIPE I (1200)	1
11	TC-10-1000021	VERTICAL OIL TANK PIPE (850)	1
12	TC-10-1000020	TRAILER CYLINDER RODLESS CAVITY	2
13	TC-10-1000019	TRAIL OIL TANK OIL PIPE (1800)	1



ITEM	PART. No	DESCRIPTION.	QT. Y
1	TC-10-1031200	PUMP STATION COMPONENTS	1
2	TC-10-1031100	VALVE ASSEMBLY	1
3	TC-DJ-5880007	380V/220V50/60Hz PUMP MOTOR	1



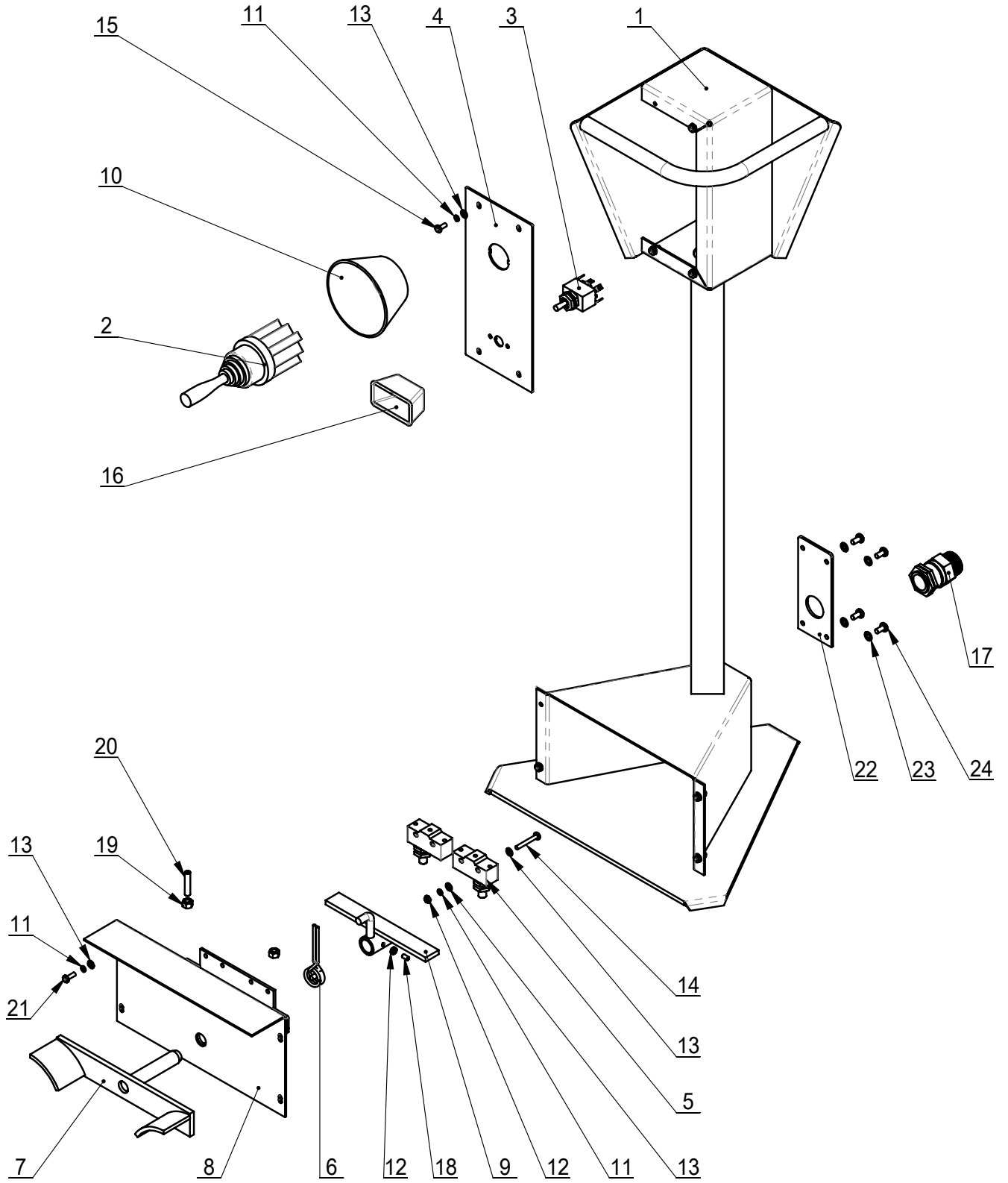
ITEM	PART. No	DESCRIPTION.	QT. Y
1	TC-10-1031103	THE VALVE BLOCK	1
2	TC-10-1620005	OIL ROUTE DOUBLE SCREW ROD	6
3	TC-20-1031102	VALVE PLATE CONNECTION PLATE	1
4	GB70. 1-M6×35	INNER HEXA CYLINDRICAL SCREW	3
5	GB70. 1-M6×60	INNER HEXA CYLINDRICAL SCREW	2
6	TC-20-1031104	SOLENOID VALVE	3
7	GB70. 1-M5×45	INNER HEXA CYLINDRICAL SCREW	8
8	JB982-14	SEALING COMPOUND	6
9	GB3452. 1-17×2. 65-G	HYDRAULIC-PNEUMATIC RUBBER O-RING	4
10	GB859-6	LIGHT SPRING WASHER	2



TC-10-1031200

REVISION 15A-01

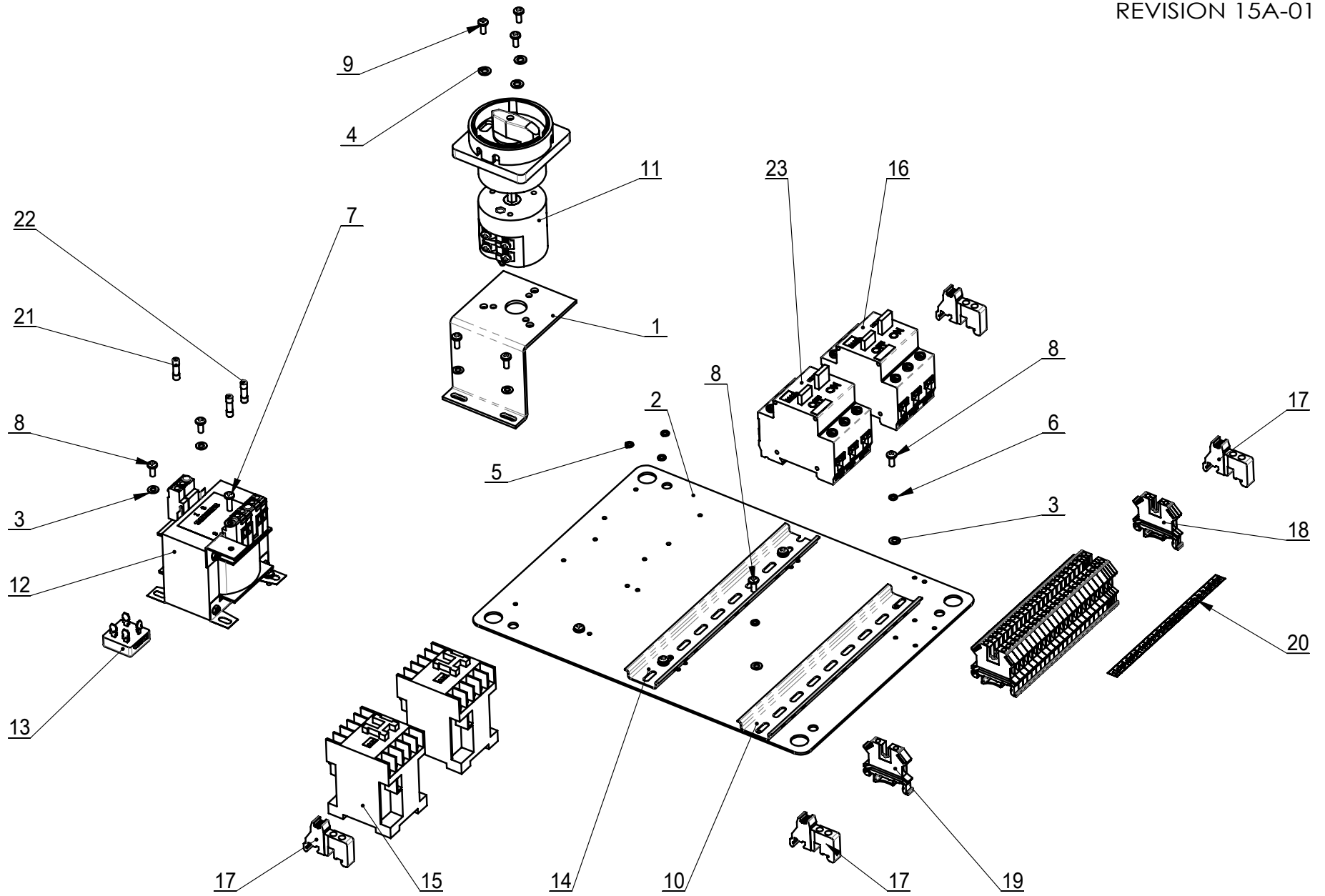
ITEM	PART. No	DESCRIPTION.	QT. Y
1	TC-20-1031204	THE FUEL TANK	1
2	TC-20-1031203	CONNECTION PLATE	1
3	GB3452. 1-100×5. 3-G	HYDRAULIC-PNEUMATIC RUBBER O-RING	1
4	TC-40-1032009	TECHNOLOGY OF PLUG	1
5	TC-20-1031201	PUMP	1
6	TC-20-1031211	FILTER POLE	1
7	TC-20-1031210	FILTER	1
8	TC-20-1031212	RETURN PIPE	2
9	GB70. 1-M8×80	INNER HEXA CYLINDRICAL	2
10	GB70. 1-M6×35	INNER HEXA CYLINDRICAL	4
11	GB5781-M6×12	HEXANGULAR BOLT	4
12	GB95-6	FLAT WASHER	4
13	TC-20-1031209	THE CUP	1
14	TC-20-1031207	DRAIN PLUG	1
15	TC-20-1031206	CHECK VALVE	1
16	TC-20-1031205	THE PRESSURE REGULATING	1
17	TC-20-1031202	COUPLING	1
18	TC-20-1031213	THROAT BUCKLE	1



TC-10-1B00000

REVISION 15A-01

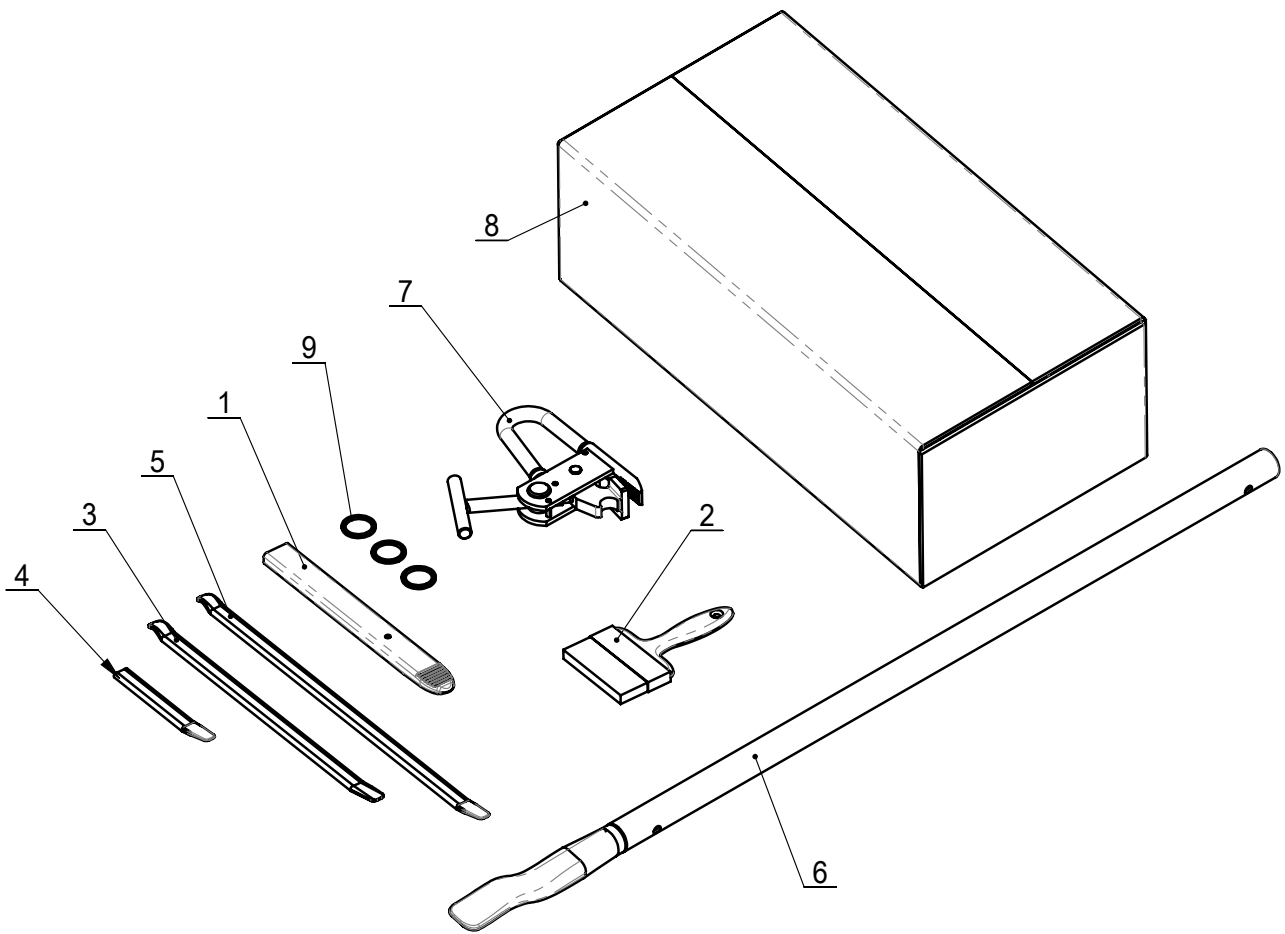
ITEM	PART. No	DESCRIPTION.	QT. Y
1	TC-10-1B10000	CONSOLE WELDING	1
2	TC-20-1700006	SWITCH TMRN304	1
3	TC-20-1700003	SWITCH TEN223	1
4	TC-20-1700002	COVER	1
5	TC-20-1700005	MICROSWITCH YBLXW	2
6	TC-20-1700001	TORSION SPRING	1
7	TC-20-1730000	DIRECTION CHANGING SHAFT	1
8	TC-20-1720000	BRACKET	1
9	TC-20-1740000	BUSHING	1
10	TC-10-1B00001	CROSS SWITCH COVER	1
11	GB93-4	STANDARD SPRING WASHER	12
12	GB6170-M4	HEXANGULAR NUT 1-TYPE	9
13	GB95-4	FLAT WASHER	20
14	GB818-M4×30-H	CROSS PANHEAD SCREW	4
15	GB818-M4×10-H	CROSS PANHEAD SCREW	4
16	TC-20-1700004	SWITCH PROTECTION BOX	1
17	TC-E-7700125	CABLE LOCK ASSEMBLY	1
18	GB77-M4×8	INNER HEXA FLAT TERMINUS	1
19	GB41-M6	HEXANGULAR NUT	2
20	GB77-M6×30	INNER HEXA FLAT TERMINUS	1
21	GB818-M4×12-H	CROSS PANHEAD SCREW	4
22	TC-20-1700009	plate	1
23	GB95-5	FLAT WASHER	4
24	GB818-M5×10-H	CROSS PANHEAD SCREW	4



TC-10-2231380

REVISION 15A-01

ITEM	PART. No	DESCRIPTION.	QT. Y
1	TC-E-7500003	SWITCH HOLDER	1
2	TC-E-7600001	ELECTRICAL BLOCK BOARD	1
3	GB95-4	FLAT WASHER	12
4	GB95-5	FLAT WASHER	2
5	GB93-5	STANDARD SPRING WASHER	2
6	GB93-4	STANDARD SPRING WASHER	12
7	GB818-M4×20	CROSS PANHEAD SCREW	1
8	GB818-M4×10	CROSS PANHEAD SCREW	8
9	GB818-M4×16	CROSS PANHEAD SCREW	3
10	TC-E-7363520	LONG FIXED PLATE 220mm	1
11	TC-E-2460020	SWITCH	1
12	TC-E-3838001	TRANSFORMER ASSEMBLY JBK-100	1
13	TC-E-7103510	RECTIFIER BRIDGE BLOCK	1
14	TC-E-7363535	LONG FIXED PLATE 235mm	1
15	TC-E-4201224	AC CONTACTOR S-P12	2
16	TC-E-4110806	OVERLOAD	1
17	TC-E-5130000	FIXTURE CLAMP	4
18	TC-E-5120025	POWER-LINE TERMINAL	3
19	TC-E-5110025	POWER-LINE TERMINAL	22
20	TC-E-7858803	NUMBER PLATES	1
21	TC-E-7152001	FUSE-6A	1
22	TC-E-7152004	FUSE	2
23	TC-E-4110804	OVERLOAD	1



ITEM	PART.No	DESCRIPTION.	QT.Y
1	TC-40-8000006	24INCH CROWBAR	1
2	TC-40-8000007	BRUSH	1
3	C-54-8000003	CROWBAR	1
4	C-01-1000012	20INCH CROWBAR	1
5	TC-10-6000001	24" CROWBAR	1
6	TC-10-6100000	CROWBAR	1
7	TC-10-8200000	CLAMP ASSEMBLY	1
8	TC-20-6000003	ACCESSORY BOX	1
9	TC-10-1621005	GSF0360 RING	3